

THE LOT NUMBER IS FOUND IN THE UPPER RIGHT HAND CORNER OF LOTS AS YOU FACE THE SECTION AND ARE INDICATED THUS ↗

LOCATION OF GRAVE MARKERS SHOWN THUS ↘

ALL LOTS ARE 2 GRAVE LOTS EXCEPT WHERE OTHERWISE NOTED.

ALL 2 GRAVE LOTS ARE 6'X9'
 " 3 " " " 5'X9'

2 GRAVE LOTS = 688
 3 GRAVE LOTS = 28
 TOTAL = 716

Lot 1 to 610A
 Lot 4001 to 4051
 Lot 4306A to 4338

HOLY CROSS CEMETERY
 CLEVELAND, OHIO
 NORTH PART OF
SECTION 8
 Scale 1"=20' G.C.A. 5-26-49

Rev. 1-5-85
 Rev. 1-3-75
 Rev. 4-2-64

1200

3700 N.

SOUTH CENTRAL PART SEC. 8

4259 1845	1750 1749	1677	1676 1583	1582 1489	1488 1395	1394 1301	1300 1207	1206 1113	1112 1019	1018 925	924 831	830	736	754 659	658 4099
4260 1844	1751 1748	1678	1675 1584	1581 1490	1487 1396	1393 1302	1299 1208	1205 1114	1111 1020	1017 926	923 832	829	735	753 660	657 4098
4261 1843	1752 1741	1679	1674 1585	1580 1491	1486 1397	1392 1303	1298 1209	1204 1115	1110 1021	1016 927	922 833	828	734	752 661	656 4097
4262 1842	1753 1746	1680	1673 1586	1579 1492	1485 1398	1391 1304	1297 1210	1203 1116	1109 1022	1015 928	921 834	827	733	751 662	655 4096
4263 1841	1754 1745	1681	1672 1587	1578 1493	1484 1399	1390 1305	1296 1211	1202 1117	1108 1023	1014 929	920 835	826	732	750 663	654 4095
4264 1840	1755 1744	1682	1671 1588	1577 1494	1483 1400	1389 1306	1295 1212	1201 1118	1107 1024	1013 930	919 836	825	731	749 664	653 4094
4265 1839	1756 1743	1683	1670 1589	1576 1495	1482	1388 1307	1294 1213	1200 1119	1106 1025	1012 931	918 837	824	730	748 665	652 4093
4266 1838	1757 1742	1684	1669 1590	1575 1496	1481	1387 1308	1293 1214	1199 1120	1105 1026	1011 932	917 838	823	729	747 666	651 4092
4267 1837	1758 1741	1685	1668 1591	1574 1497		1386 1309	1292 1215	1198 1121	1104 1027	1010 933	916 839	822	728	746 667	650 4091
4268 1836	1759 1740	1686	1667 1592	1573 1498		1385 1310	1291 1216	1197 1122	1103 1028	1009 934	915 840	821	727	745 668	649 4090
4269 1835	1760 1739	1687	1666 1593	1572 1499		1384 1311	1290 1217	1196 1123	1102 1029	1008 935	914 841	820	726	744 669	648 4089
4270 1834	1761 1738	1688	1665 1594	1571 1500		1383 1312	1289 1218	1195 1124	1101 1030	1007 936	913 842	819	725	743 670	647 4088
4271 1833	1762 1737	1689	1664 1595	1570 1501	1476 1407	1382 1313	1288 1219	1194 1125	1100 1031	1006 937	912 843	818	724	742 671	646 4087
4272 1832	1763 1736	1690	1663 1596	1569 1502	1475 1408	1381 1314	1287 1220	1193 1126	1099 1032	1005 938	911 844	817	723	741 672	645 4086
4273 1831	1764 1735	1691	1662 1597	1568 1503	1474 1409	1380 1315	1286 1221	1192 1127	1098 1033	1004 939	910 845	816	722	740 673	644 4085
4274 1830	1765 1734	1692	1661 1598	1567 1504	1473 1410	1379 1316	1285 1222	1191 1128	1097 1034	1003 940	909 846	815	721	739 674	643 4084
4275 1829	1766 1733	1693	1660 1599	1566 1505	1472 1411	1378 1317	1284 1223	1190 1129	1096 1035	1002 941	908 847	814	720	738 675	642 4083
4276 1828	1767 1732	1694	1659 1600	1565 1506	1471 1412	1377 1318	1283 1224	1189 1130	1095 1036	1001 942	907 848	813	719	737 676	641 4082
4277 1827	1768 1731	1695	1658 1601	1564 1507	1470 1413	1376 1319	1282 1225	1188 1131	1094 1037	1000 943	906 849	812	718	736 677	640 4081
4278 1826	1769 1730	1696	1657 1602	1563 1508	1469 1414	1375 1320	1281 1226	1187 1132	1093 1038	999 944	905 850	811	717	735 678	639 4080
4279 1825	1770 1729	1697	1656 1603	1562 1509	1468 1415	1374 1321	1280 1227	1186 1133	1092 1039	998 945	904 851	810	716	734 679	638 4079
4280 1824	1771 1728	1698	1655 1604	1561 1510	1467 1416	1373 1322	1279 1228	1185 1134	1091 1040	997 946	903 852	809	715	733 680	637 4078
4281 1823	1772 1727	1699	1654 1605	1560 1511	1466 1417	1372 1323	1278 1229	1184 1135	1090 1041	996 947	902 853	808	714	732 681	636 4077
4282 1822	1773 1726	1700	1653 1606	1559 1512	1465 1418	1371 1324	1277 1230	1183 1136	1089 1042	995 948	901 854	807	713	731 682	635 4076
4283 1821	1774 1725	1701	1652 1607	1558 1513	1464 1419	1370 1325	1276 1231	1182 1137	1088 1043	994 949	900 855	806	712	730 683	634 4075
4284 1820	1775 1724	1702	1651 1608	1557 1514	1463 1420	1369 1326	1275 1232	1181 1138	1087 1044	993 950	899 856	805	711	729 684	633 4074
4285 1819	1776 1723	1703	1650 1609	1556 1515	1462 1421	1368 1327	1274 1233	1180 1139	1086 1045	992 951	898 857	804	710	728 685	632 4073
4286 1818	1777 1722	1704	1649 1610	1555 1516	1461 1422	1367 1328	1273 1234	1179 1140	1085 1046	991 952	897 858	803	709	727 686	631 4072
4287 1817	1778 1721	1705	1648 1611	1554 1517	1460 1423	1366 1329	1272 1235	1178 1141	1084 1047	990 953	896 859	802	708	726 687	630 4071
4288 1816	1779 1720	1706	1647 1612	1553 1518	1459 1424	1365 1330	1271 1236	1177 1142	1083 1048	989 954	895 860	801	707	725 688	629 4070
4289 1815	1780 1719	1707	1646 1613	1552 1519	1458 1425	1364 1331	1270 1237	1176 1143	1082 1049	988 955	894 861	800	706	724 689	628 4069
4290 1814	1781 1718	1708	1645 1614	1551 1520	1457 1426	1363 1332	1269 1238	1175 1144	1081 1050	987 956	893 862	799	705	723 690	627 4068
4291 1813	1782 1717	1709	1644 1615	1550 1521	1456 1427	1362 1333	1268 1239	1174 1145	1080 1051	986 957	892 863	798	704	722 691	626 4067
4292 1812	1783 1716	1710	1643 1616	1549 1522	1455 1428	1361 1334	1267 1240	1173 1146	1079 1052	985 958	891 864	797	703	721 692	625 4066
4293 1811	1784 1715	1711	1642 1617	1548 1523	1454 1429	1360 1335	1266 1241	1172 1147	1078 1053	984 959	890 865	796	702	720 693	624 4065
4294 1810	1785 1714	1712	1641 1618	1547 1524	1453 1430	1359 1336	1265 1242	1171 1148	1077 1054	983 960	889 866	795	701	719 694	623 4064
4295 1809	1786 1713	1713	1640 1619	1546 1525	1452 1431	1358 1337	1264 1243	1170 1149	1076 1055	982 961	888 867	794	700	718 695	622 4063
4296 1808	1787 1712	1714	1639 1620	1545 1526	1451 1432	1357 1338	1263 1244	1169 1150	1075 1056	981 962	887 868	793	699	717 696	621 4062
4297 1807	1788 1711	1715	1638 1621	1544 1527	1450 1433	1356 1339	1262 1245	1168 1151	1074 1057	980 963	886 869	792	698	716 697	620 4061
4298 1806	1789 1710	1716	1637 1622	1543 1528	1449 1434	1355 1340	1261 1246	1167 1152	1073 1058	979 964	885 870	791	697	715 698	619 4060
4299 1805	1790 1709	1717	1636 1623	1542 1529	1448 1435	1354 1341	1260 1247	1166 1153	1072 1059	978 965	884 871	790	696	714 699	618 4059
4300 1804	1791 1708	1718	1635 1624	1541 1530	1447 1436	1353 1342	1259 1248	1165 1154	1071 1060	977 966	883 872	789	695	713 700	617 4058
4301 1803	1792 1707	1719	1634 1625	1540 1531	1446 1437	1352 1343	1258 1249	1164 1155	1070 1061	976 967	882 873	788	694	712 701	616 4057
4302 1802	1793 1706	1720	1633 1626	1539 1532	1445 1438	1351 1344	1257 1250	1163 1156	1069 1062	975 968	881 874	787	693	711 702	615 4056
4303 1801	1794 1705	1721	1632 1627	1538 1533	1444 1439	1350 1345	1256 1251	1162 1157	1068 1063	974 969	880 875		692	710 703	614 4055
4304 1800	1795 1704	1722	1631 1628	1537 1534	1443 1440	1349 1346	1255 1252	1161 1158	1067 1064	973 970	879 876		691	709 704	613 4054
4305 1799	1796 1703	1723	1630 1629	1536 1535	1442 1441	1348 1347	1254 1253	1160 1159	1066 1065	972 971	878 877		690	708 705	612 4053
4306 1798	1797 1702	1724	1629 1630	1535 1536	1441 1442	1347 1348	1253 1254	1159 1160	1065 1066	971 972	877 878		689	707 706	611 4052

NORTH PART SEC. 8

SEC. 9

4000 N.

3700 N.

SEC. 9

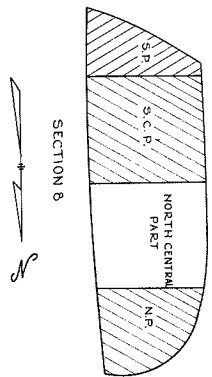
HOLY CROSS CEMETERY
CLEVELAND, OHIO
NORTH CENTRAL PART OF
SECTION 8
Scale 1"=20' G.C.A. 5-31-49

Rev. © 1-6-86
Rev. © 1-3-76
Rev. © 4-2-64

THE LOT NUMBER IS FOUND IN THE UPPER, RIGHT HAND CORNER OF LOTS AS YOU FACE THE SECTION AND ARE INDICATED THUS \nwarrow
LOCATION OF GRAVE MARKERS SHOWN THUS \blacksquare
ARROW INDICATES DIRECTION GRAVE MARKERS WILL FACE.
ALL LOTS ARE 2 GRAVE LOTS EXCEPT WHERE OTHERWISE NOTED.
ALL 2 GRAVE LOTS ARE 6'x9'
3 GRAVE LOTS " 9'x9'

2 GRAVE LOTS = 1252
3 GRAVE LOTS = 47
TOTAL = 1319

Lot 611 to 1845
Lot 4052 to 4099
Lot 4259 to 4306



1200



THE LOT NUMBER IS FOUND IN THE UPPER RIGHT HAND CORNER OF LOTS AS YOU FACE THE SECTION AND ARE INDICATED THUS []

LOCATION OF GRAVE MARKERS SHOWN THUS []

ARROW INDICATES DIRECTION GRAVE MARKERS WILL FACE.

ALL LOTS ARE 2 GRAVE LOTS EXCEPT WHERE OTHERWISE NOTED.

ALL 2 GRAVE LOTS ARE 6'x9'

3 GRAVE LOTS " 9'x9'

2 GRAVE LOTS = 1285

3 GRAVE LOTS = 102

TOTAL = 1385

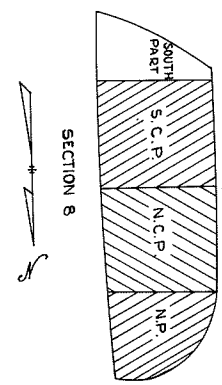
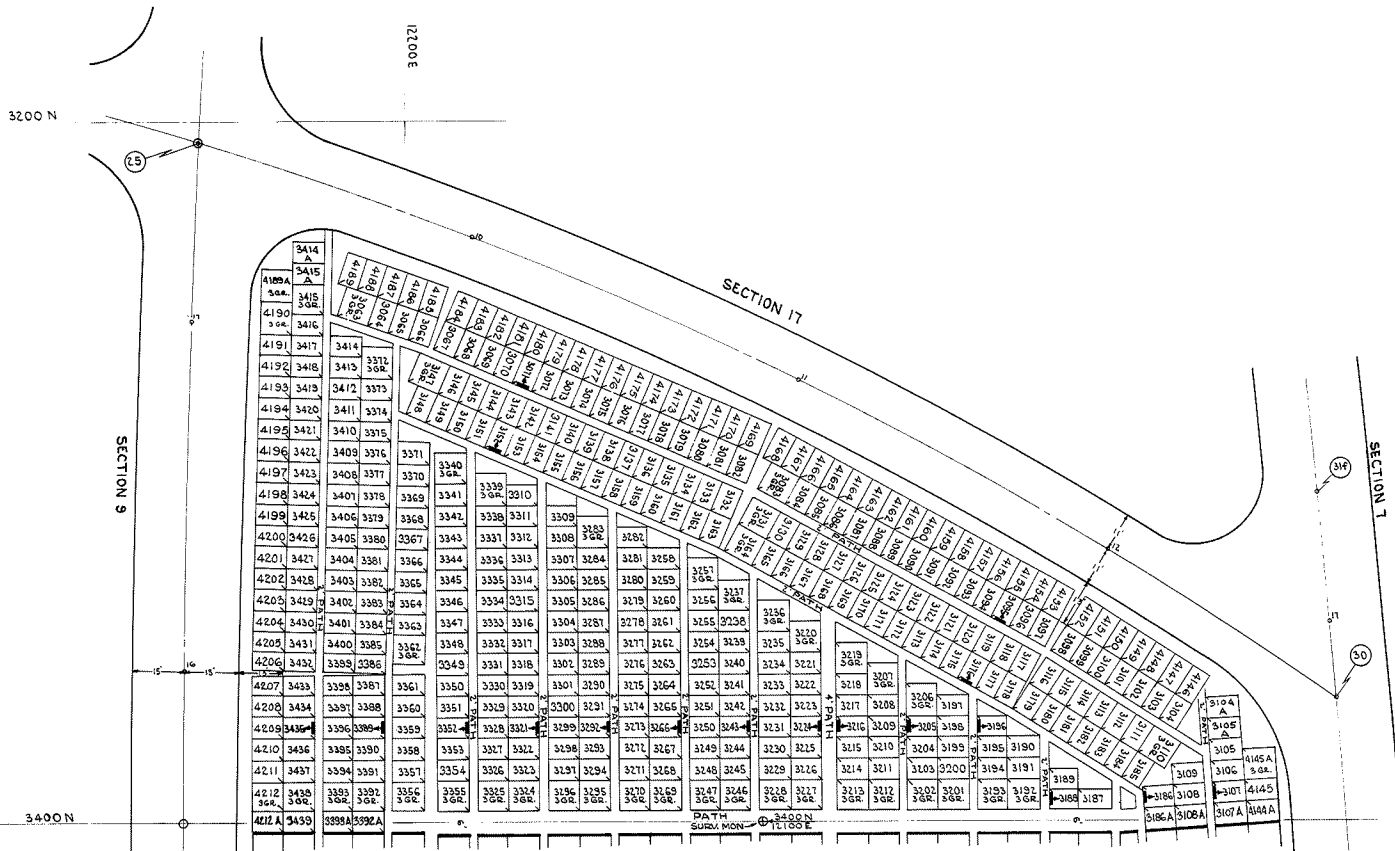
Lot 1846 to 3062

Lot 4099A to 4144

Lot 4-213 to 4258A

HOLY CROSS CEMETERY
 CLEVELAND, OHIO
 SOUTH CENTRAL PART OF
SECTION 8
 Scale 1"=20' G.C.A. 6-13-49

Rev. ① 2-4-85
 Rev. ② 2-3-75
 Rev. ③ 4-1-64



THE LOT NUMBER IS FOUND IN THE UPPER RIGHT HAND CORNER OF LOTS AS YOU FACE THE SECTION AND ARE INDICATED THUS []

LOCATION OF GRAVE MARKERS SHOWN THUS []

ARROW INDICATES DIRECTION GRAVE MARKERS WILL FACE.

ALL LOTS ARE 2 GRAVE LOTS EXCEPT WHERE OTHERWISE NOTED.

ALL 2 GRAVE LOTS ARE 6'x9'

3 GRAVE LOTS " 9'x9'

2 GRAVE LOTS = 4 1/4
 3 GRAVE LOTS = 4 1/4
 TOTAL = 4 5/8

Lot 3063 to 3439
 Lot 4145 to 4212A

HOLY CROSS CEMETERY
 CLEVELAND, OHIO
 SOUTH PART OF
SECTION 8
 Scale 1" = 20' G.C.A. 6-14-49

Rev. 2-5-65
 Rev. 1-9-75
 Rev. 1-4-2-64