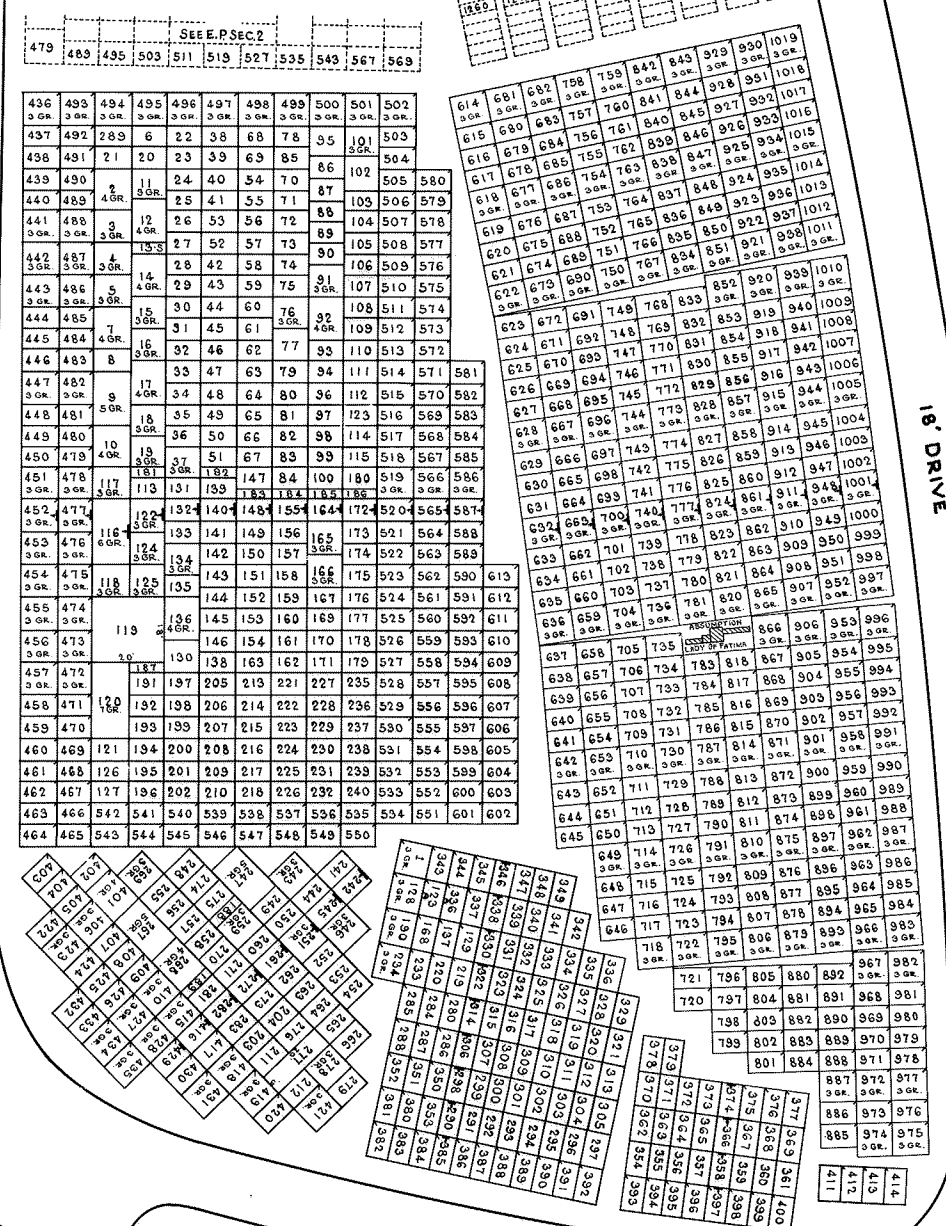


SEE E.P. SEC. 2

479	483	495	503	511	519	527	535	543	567	569
-----	-----	-----	-----	-----	-----	-----	-----	-----	-----	-----

SEC. 6-13

1860	1875	1880	1885	1890	1895	1900	1905
------	------	------	------	------	------	------	------



18' DRIVE

18' DRIVE

18' DRIVE

REV. 2-1-55
REV. 3-1-55
REV. 3-2-57

REDRAWN FROM OLD SEC. MAP
HOLY CROSS CEMETERY
AKRON, OHIO
SECTION 9
SCALE 1"=20'
G.C. SAND
MAY 1955

NOTE:
ONLY LOTS INDICATED THUS HAVE LOT MARKERS IN UPPER LEFT HAND CORNER AS YOU FACE THE LOTS.

LOCATION OF GRAVE MARKERS SHOWN THUS **ARROW INDICATES DIRECTION GRAVE MARKERS WILL FACE.**

ALL LOTS ARE 2 GRAVE LOTS EXCEPT WHERE OTHERWISE NOTED

ALL SINGLE GR. ARE 3x10'

ALL 2 GR. LOTS ARE 6x10'

ALL 3 GR. LOTS ARE 9x10'

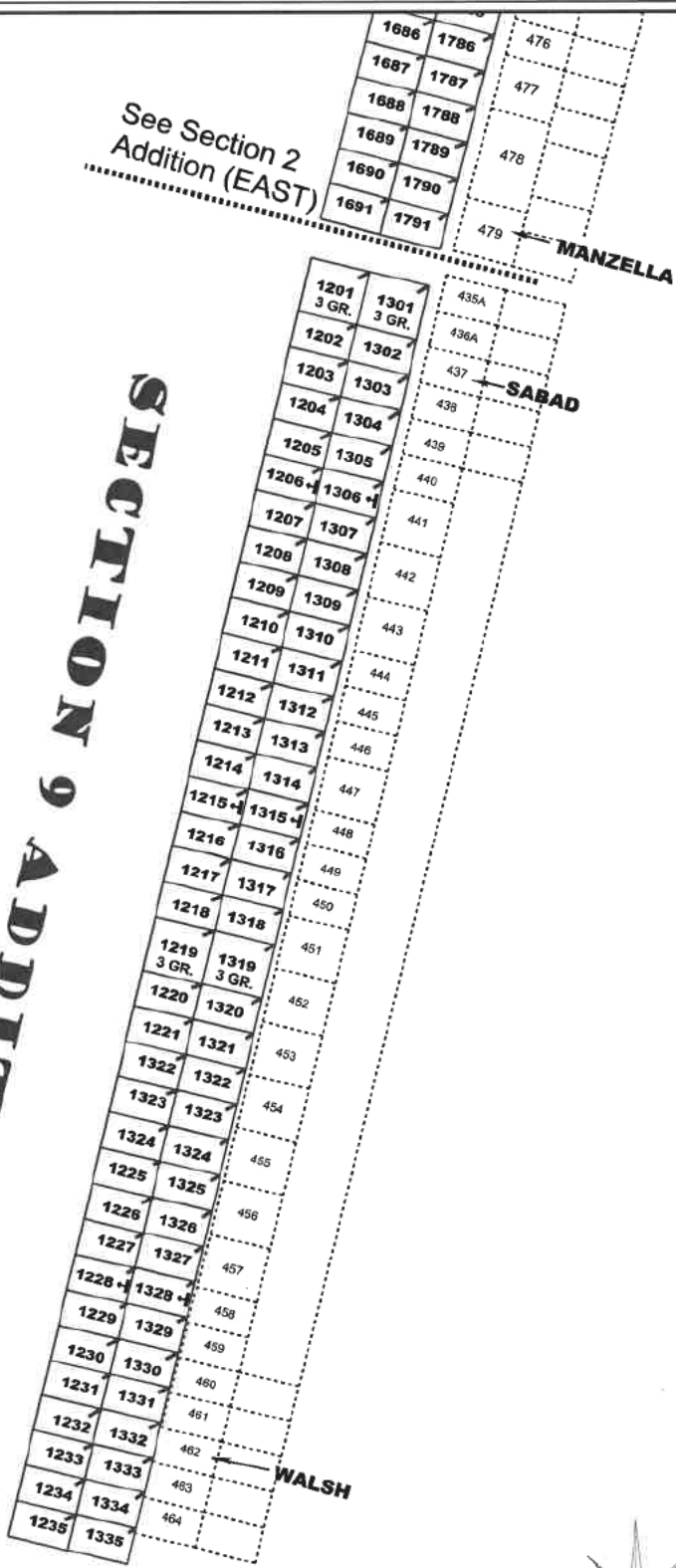
ALL 4 GR. LOTS ARE 12x10'

ALL 5 GR. LOTS ARE 15x10'

ALL 6 GR. LOTS ARE 18x10'

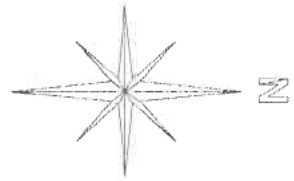
ALL 7 GR. LOTS ARE 21x10'

WHOLE
SEC. 9



SECTION 9 ADDITION

ALL LOTS ARE 2 GRAVE LOTS EXCEPT WHERE NOTED OTHERWISE.
 2 Grave Lots Are 6' x 10'
 3 Grave Lots Are 9' x 10'
 LOT MARKERS ARE LOCATED AT THE UPPER LEFT HAND CORNER AS YOU FACE THE LOTS.
 Grave Marker Locations Shown Thus **T**
 Arrow Indicates Direction Grave Markers Will Face.



Traverse PC

Rev. 12-18-17

Holy Cross Cemetery
 Akron, Ohio
**SECTION 9
 ADDITION**
 Scale: 1"=30'
 J. Bischof
 Dec., 2017