



NOTE: ONLY LOTS INDICATED THUS [ ] HAVE LOT NUMBERS IN JUST LEFT HAND CORNER DO YOU FACE THE LOT. LOTS 1007 THROUGH 1442 ARE 10' x 12' UNLESS NOTED OTHERWISE EXCEPT 1118 & 1209 WHICH ARE 10' x 9' W.

REBRANN  
**HOLY CROSS CEMETERY**  
 EAST PART  
 SECTION 3  
 SCALE 1"=50'  
 G.C.A. JAN. 1956

OFFICE

SEE WEST PART SECTION 3

SECT 7

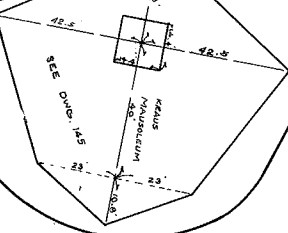
UPPER DRIVE

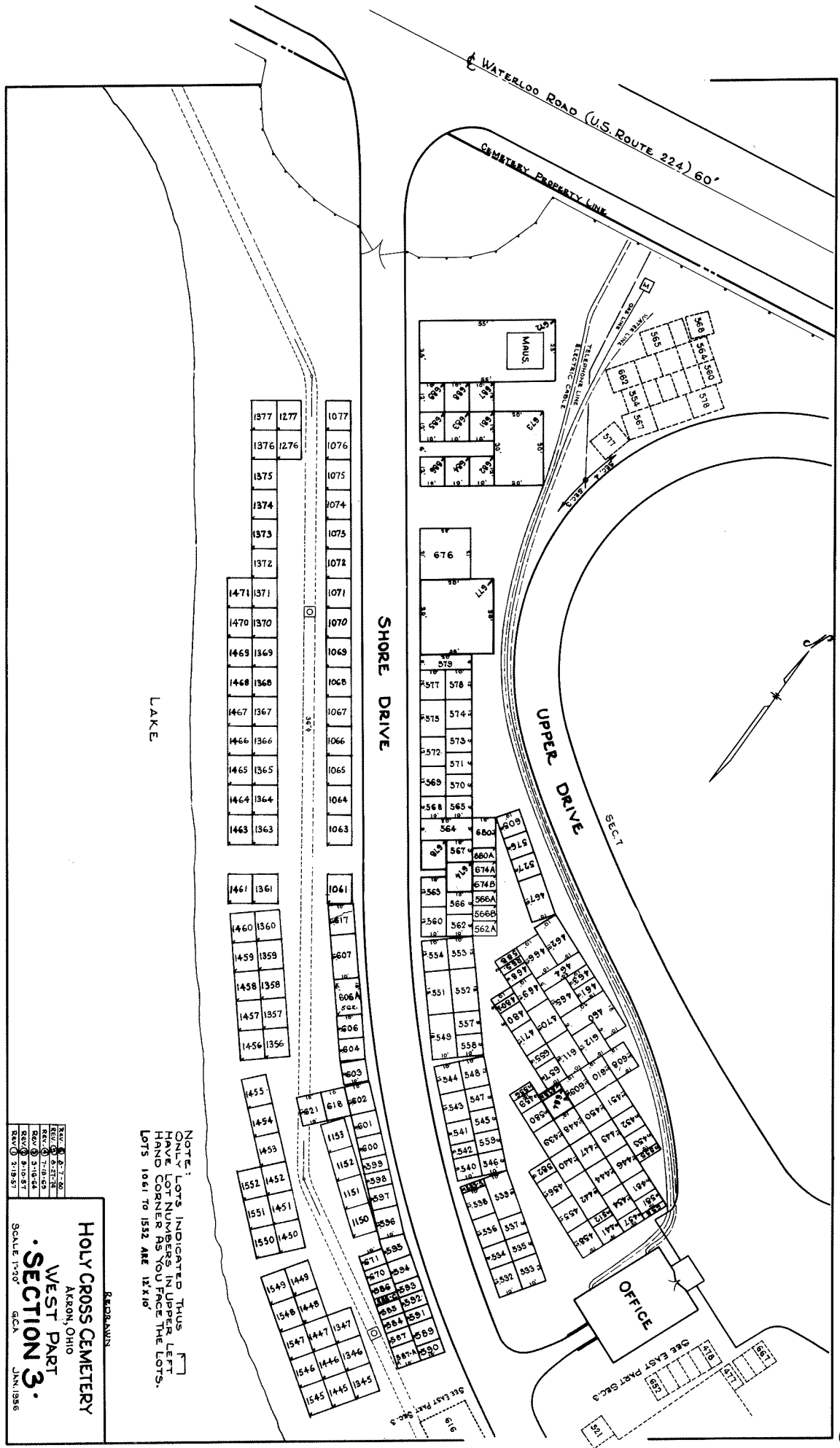
SECT 4

SHORE DRIVE

DRIVE

SECT 5





WATERLOO ROAD (U.S. ROUTE 224) 60'

CEMETERY PROPERTY LINE

SHORE DRIVE

UPPER DRIVE

LAKE

OFFICE

REV. 8-7-49  
 REV. 6-27-50  
 REV. 7-19-52  
 REV. 8-11-57  
 REV. 3-18-57

SCALE 1"=30'  
 GCA  
 JAN. 1956

**HOLY CROSS CEMETERY**  
 AKRON, OHIO  
**WEST PART**  
**SECTION 3.**

NOTE: LOTS INDICATED THUS [ ]  
 HAVE LOT NUMBERS IN UPPER LEFT  
 HAND CORNER AS YOU FACE THE LOTS.  
 LOTS 1061 TO 1552 ARE 12'X10'