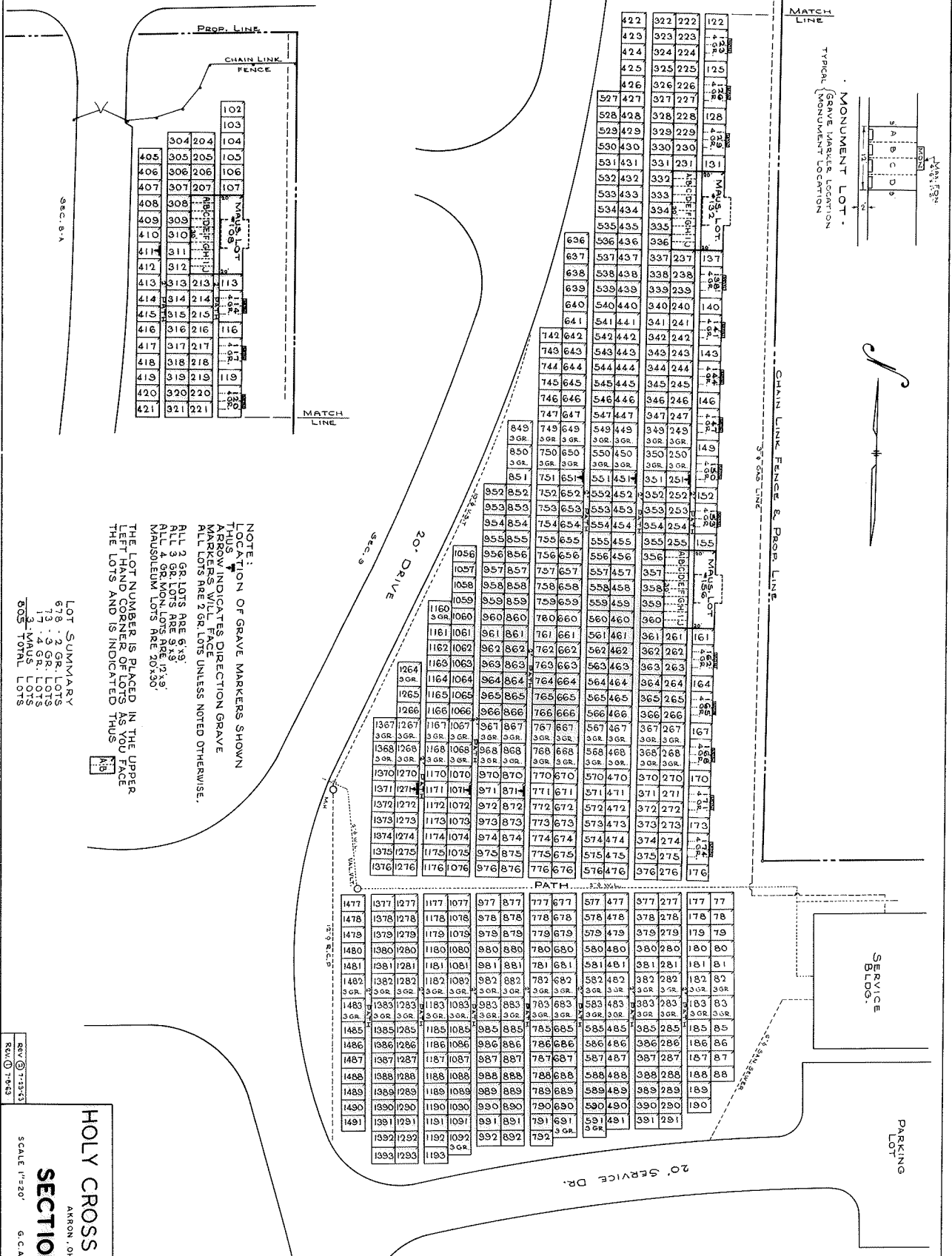


WATERLOO RD. U.S. RT. 224 (60')



NOTE:  
 LOCATION OF GRAVE MARKERS SHOWN  
 THUS  
 ARROW INDICATES DIRECTION GRAVE  
 MARKERS WILL FACE  
 ALL LOTS ARE 2 GR. LOTS UNLESS NOTED OTHERWISE.  
 ALL 2 GR. LOTS ARE 6'x9'  
 ALL 3 GR. LOTS ARE 9'x9'  
 ALL 4 GR. MON. LOTS ARE 12'x9'  
 MANUSCRIPT LOTS ARE 20'x30'

THE LOT NUMBER IS PLACED IN THE UPPER  
 LEFT HAND CORNER OF LOTS AS YOU FACE  
 THE LOTS AND IS INDICATED THUS

LOT SUMMARY  
 678 2 GR. LOTS  
 17 4 GR. LOTS  
 3 MAUS. LOTS  
 805 TOTAL LOTS

REV 7-23-83  
 RW 7-8-83

HOLY CROSS CEMETERY  
 AKRON, OHIO  
**SECTION 29**  
 SCALE 1"=20'  
 G.C.A.  
 NOV. 1981