

CATHOLIC CEMETERIES ASSOCIATION IS NOT RESPONSIBLE FOR ANY DECORATIONS OR PERSONAL EFFECTS LEFT ON GRAVES.

SEE MIDDLE PART

114	314	514	714	914	1114	1314	1514	1714	1913	2113	2313	3513	3713	3913	4113	4313	4513
115	315	515	715	915	1115	1315	1515	1715	1914	2114	2314	3514	3714	3914	4114	4314	4514
116	316	516	716	916	1116	1316	1516	1716	1915	2115	2315	3515	3715	3915	4115	4315	4515
117	317	517	717	917	1117	1317	1517	1717	1916	2116	2316	3516	3716	3916	4116	4316	4516
118	318	518	718	918	1118	1318	1518	1718	1917	2117	2317	3517	3717	3917	4117	4317	4517
119	319	519	719	919	1119	1319	1519	1719	1918	2118	2318	3518	3718	3918	4118	4318	4518
120	320	520	720	920	1120	1320	1520	1720	1919	2119	2319	3519	3719	3919	4119	4319	4519
121	321	521	721	921	1121	1321	1521	1721	1920	2120	2320	3520	3720	3920	4120	4320	4520
122	322	522	722	922	1122	1322	1522	1722	1921	2121	2321	3521	3721	3921	4121	4321	4521
123	323	523	723	923	1123	1323	1523	1723	1922	2122	2322	3522	3722	3922	4122	4322	4522
124	324	524	724	924	1124	1324	1524	1724	1923	2123	2323	3523	3723	3923	4123	4323	4523
125	325	525	725	925	1125	1325	1525	1725	1924	2124	2324	3524	3724	3924	4124	4324	4524
126	326	526	726	926	1126	1326	1526	1726	1925	2125	2325	3525	3725	3925	4125	4325	4525
127	327	527	727	927	1127	1327	1527	1727	1926	2126	2326	3526	3726	3926	4126	4326	4526
128	328	528	728	928	1128	1328	1528	1728	1927	2127	2327	3527	3727	3927	4127	4327	4527
129	329	529	729	929	1129	1329	1529	1729	1928	2128	2328	3528	3728	3928	4128	4328	4528
130	330	530	730	930	1130	1330	1530	1730	1929	2129	2329	3529	3729	3929	4129	4329	4529
131	331	531	731	931	1131	1331	1531	1731	1930	2130	2330	3530	3730	3930	4130	4330	4530
132	332	532	732	932	1132	1332	1532	1732	1931	2131	2331	3531	3731	3931	4131	4331	4531
133	333	533	733	933	1133	1333	1533	1733	1932	2132	2332	3532	3732	3932	4132	4332	4532
134	334	534	734	934	1134	1334	1534	1734	1933	2133	2333	3533	3733	3933	4133	4333	4533
135	335	535	735	935	1135	1335	1535	1735	1934	2134	2334	3534	3734	3934	4134	4334	4534
136	336	536	736	936	1136	1336	1536	1736	1935	2135	2335	3535	3735	3935	4135	4335	4535
137	337	537	737	937	1137	1337	1537	1737	1936	2136	2336	3536	3736	3936	4136	4336	4536
138	338	538	738	938	1138	1338	1538	1738	1937	2137	2337	3537	3737	3937	4137	4337	4537
139	339	539	739	939	1139	1339	1539	1739	1938	2138	2338	3538	3738	3938	4138	4338	4538
140	340	540	740	940	1140	1340	1540	1740	1939	2139	2339	3539	3739	3939	4139	4339	4539
141	341	541	741	941	1141	1341	1541	1741	1940	2140	2340	3540	3740	3940	4140	4340	4540
142	342	542	742	942	1142	1342	1542	1742	1941	2141	2341	3541	3741	3941	4141	4341	4541
143	343	543	743	943	1143	1343	1543	1743	1942	2142	2342	3542	3742	3942	4142	4342	4542
144	344	544	744	944	1144	1344	1544	1744	1943	2143	2343	3543	3743	3943	4143	4343	4543
145	345	545	745	945	1145	1345	1545	1745	1944	2144	2344	3544	3744	3944	4144	4344	4544
146	346	546	746	946	1146	1346	1546	1746	1945	2145	2345	3545	3745	3945	4145	4345	4545
147	347	547	747	947	1147	1347	1547	1747	1946	2146	2346	3546	3746	3946	4146	4346	4546
148	348	548	748	948	1148	1348	1548	1748	1947	2147	2347	3547	3747	3947	4147	4347	4547
149	349	549	749	949	1149	1349	1549	1749	1948	2148	2348	3548	3748	3948	4148	4348	4548
150	350	550	750	950	1150	1350	1550	1750	1949	2149	2349	3549	3749	3949	4149	4349	4549
151	351	551	751	951	1151	1351	1551	1751	1950	2150	2350	3550	3750	3950	4150	4350	4550
152	352	552	752	952	1152	1352	1552	1752	1951	2151	2351	3551	3751	3951	4151	4351	4551
153	353	553	753	953	1153	1353	1553	1753	1952	2152	2352	3552	3752	3952	4152	4352	4552
154	354	554	754	954	1154	1354	1554	1754	1953	2153	2353	3553	3753	3953	4153	4353	4553
155	355	555	755	955	1155	1355	1555	1755	1954	2154	2354	3554	3754	3954	4154	4354	4554
156	356	556	756	956	1156	1356	1556	1756	1955	2155	2355	3555	3755	3955	4155	4355	4555
157	357	557	757	957	1157	1357	1557	1757	1956	2156	2356	3556	3756	3956	4156	4356	4556
158	358	558	758	958	1158	1358	1558	1758	1957	2157	2357	3557	3757	3957	4157	4357	4557
159	359	559	759	959	1159	1359	1559	1759	1958	2158	2358	3558	3758	3958	4158	4358	4558
160	360	560	760	960	1160	1360	1560	1760	1959	2159	2359	3559	3759	3959	4159	4359	4559

± 24' LOWER DR.

SEC. 63

± 24' DRIVE

SEC. 63

± 24' UPPER DR.

SEC. 66

SEC. 67

NOTE: THE LOT NUMBER IS PLACED IN THE LEFT HAND CORNER OF THE LOTS YOU FACE THE LOTS AND IS INDICATED THUS [T] LOCATION OF GRAVE MARKERS SHOWN THUS [T] ARROW INDICATES DIRECTION GRAVE MARKERS WILL FACE. ALL LOTS ARE 2 GRAVE LOTS EXCEPT WHERE OTHERWISE NOTED. ALL 2 GRAVE LOTS ARE 6'x9' ALL 3 GRAVE LOTS ARE 9'x9'

LOT SUMMARY  
627-2 GRAVE LOTS  
91-3 GRAVE LOTS  
718 - TOTAL LOTS

CALVARY CEMETERY  
EAST PART  
SECTION 70  
SCALE 1"=20'  
G.C.A.  
FEBRUARY, 1982

6' PATH

52	252	452	652	852	1052	1252	1452	1652	1852	2052	4053	4254	4454
53	253	453	653	853	1053	1253	1453	1653	1853	2053	4054	4255	4455
54	254	454	654	854	1054	1254	1454	1654	1854	2054	4055	4256	4456
55	255	455	655	855	1055	1255	1455	1655	1855	2055	4056	4257	4457
56	256	456	656	856	1056	1256	1456	1656	1856	2056	4057	4258	4458
57	257	457	657	857	1057	1257	1457	1657	1857	2057	4058	4259	4459
58	258	458	658	858	1058	1258	1458	1658	1858	2058	4059	4260	4460
59	259	459	659	859	1059	1259	1459	1659	1859	2059	4060	4261	4461
60	260	460	660	860	1060	1260	1460	1660	1860	2060	4061	4262	4462
61	261	461	661	861	1061	1261	1461	1661	1861	2061	4062	4263	4463
62	262	462	662	862	1062	1262	1462	1662	1862	2062	4063	4264	4464
63	263	463	663	863	1063	1263	1463	1663	1863	2063	4064	4265	4465
64	264	464	664	864	1064	1264	1464	1664	1864	2064	4065	4266	4466
65	265	465	665	865	1065	1265	1465	1665	1865	2065	4066	4267	4467
66	266	466	666	866	1066	1266	1466	1666	1866	2066	4067	4268	4468
67	267	467	667	867	1067	1267	1467	1667	1867	2067	4068	4269	4469
68	268	468	668	868	1068	1268	1468	1668	1868	2068	4069	4270	4470
69	269	469	669	869	1069	1269	1469	1669	1869	2069	4070	4271	4471
70	270	470	670	870	1070	1270	1470	1670	1870	2070	4071	4272	4472
71	271	471	671	871	1071	1271	1471	1671	1871	2071	4072	4273	4473
72	272	472	672	872	1072	1272	1472	1672	1872	2072	4073	4274	4474
73	273	473	673	873	1073	1273	1473	1673	1873	2073	4074	4275	4475
74	274	474	674	874	1074	1274	1474	1674	1874	2074	4075	4276	4476
75	275	475	675	875	1075	1275	1475	1675	1875	2075	4076	4277	4477
76	276	476	676	876	1076	1276	1476	1676	1876	2076	4077	4278	4478
77	277	477	677	877	1077	1277	1477	1677	1877	2077	4078	4279	4479
78	278	478	678	878	1078	1278	1478	1678	1878	2078	4079	4280	4480
79	279	479	679	879	1079	1279	1479	1679	1879	2079	4080	4281	4481
80	280	480	680	880	1080	1280	1480	1680	1880	2080	4081	4282	4482
81	281	481	681	881	1081	1281	1481	1681	1881	2081	4082	4283	4483
82	282	482	682	882	1082	1282	1482	1682	1882	2082	4083	4284	4484
83	283	483	683	883	1083	1283	1483	1683	1883	2083	4084	4285	4485
84	284	484	684	884	1084	1284	1484	1684	1884	2084	4085	4286	4486
85	285	485	685	885	1085	1285	1485	1685	1885	2085	4086	4287	4487
86	286	486	686	886	1086	1286	1486	1686	1886	2086	4087	4288	4488
87	287	487	687	887	1087	1287	1487	1687	1887	2087	4088	4289	4489
88	288	488	688	888	1088	1288	1488	1688	1888	2088	4089	4290	4490
89	289	489	689	889	1089	1289	1489	1689	1889	2089	4090	4291	4491
90	290	490	690	890	1090	1290	1490	1690	1890	2090	4091	4292	4492
91	291	491	691	891	1091	1291	1491	1691	1891	2091	4092	4293	4493
92	292	492	692	892	1092	1292	1492	1692	1892	2092	4093	4294	4494
93	293	493	693	893	1093	1293	1493	1693	1893	2093	4094	4295	4495
94	294	494	694	894	1094	1294	1494	1694	1894	2094	4095	4296	4496
95	295	495	695	895	1095	1295	1495	1695	1895	2095	4096	4297	4497
96	296	496	696	896	1096	1296	1496	1696	1896	2096	4097	4298	4498
97	297	497	697	897	1097	1297	1497	1697	1897	2097	4098	4299	4499
98	298	498	698	898	1098	1298	1498	1698	1898	2098	4099	4300	4500
99	299	499	699	899	1099	1299	1499	1699	1899	2099	4100	4301	4501
100	300	500	700	900	1100	1300	1500	1700	1900	2100	3500	3700	4300
101	301	501	701	901	1101	1301	1501	1701	1901	2101	3501	3701	4301
102	302	502	702	902	1102	1302	1502	1702	1902	2102	3502	3702	4302
103	303	503	703	903	1103	1303	1503	1703	1903	2103	3503	3703	4303
104	304	504	704	904	1104	1304	1504	1704	1904	2104	3504	3704	4304
105	305	505	705	905	1105	1305	1505	1705	1905	2105	3505	3705	4305
106	306	506	706	906	1106	1306	1506	1706	1906	2106	3506	3706	4306
107	307	507	707	907	1107	1307	1507	1707	1907	2107	3507	3707	4307
108	308	508	708	908	1108	1308	1508	1708	1908	2108	3508	3708	4308
109	309	509	709	909	1109	1309	1509	1709	1909	2109	3509	3709	4309
110	310	510	710	910	1110	1310	1510	1710	1910	2110	3510	3710	4310
111	311	511	711	911	1111	1311	1511	1711	1911	2111	3511	3711	4311
112	312	512	712	912	1112	1312	1512	1712	1912	2112	3512	3712	4312

6' PATH

SEC. 83

24 LOWER DR.

SEC. 85

24 UPPER DR.

SEC. 86

SEE SOUTH PART

NOTE:  
 THE LOT NUMBER IS PLACED IN THE UPPER RIGHT HAND CORNER OF THE LOTS AS YOU FACE THE LOTS AND IS INDICATED THUS [arrow pointing to corner]

LOCATION OF GRAVE MARKERS SHOWN THUS [arrow pointing to marker symbol]

ARROW INDICATES DIRECTION GRAVE MARKERS WILL FACE.

ALL LOTS ARE 2 GRAVE LOTS EXCEPT WHERE OTHERWISE NOTED

ALL 3 GRAVE LOTS ARE 6'x9'

LOT SUMMARY  
 138 - 2 GRAVE LOTS  
 125 - 3 GRAVE LOTS  
 863 - TOTAL LOTS

REV. 3-31-63

CALVARY CEMETERY  
 MIDDLE PART  
 SECTION 70  
 SCALE 1"=20'  
 G.C.A. FEBRUARY, 1962

SEC. 65

± 24' DRIVE

6' SIDEWALK

± 24' LOWER DR.

SEC. 63

± 24' UPPER DR.

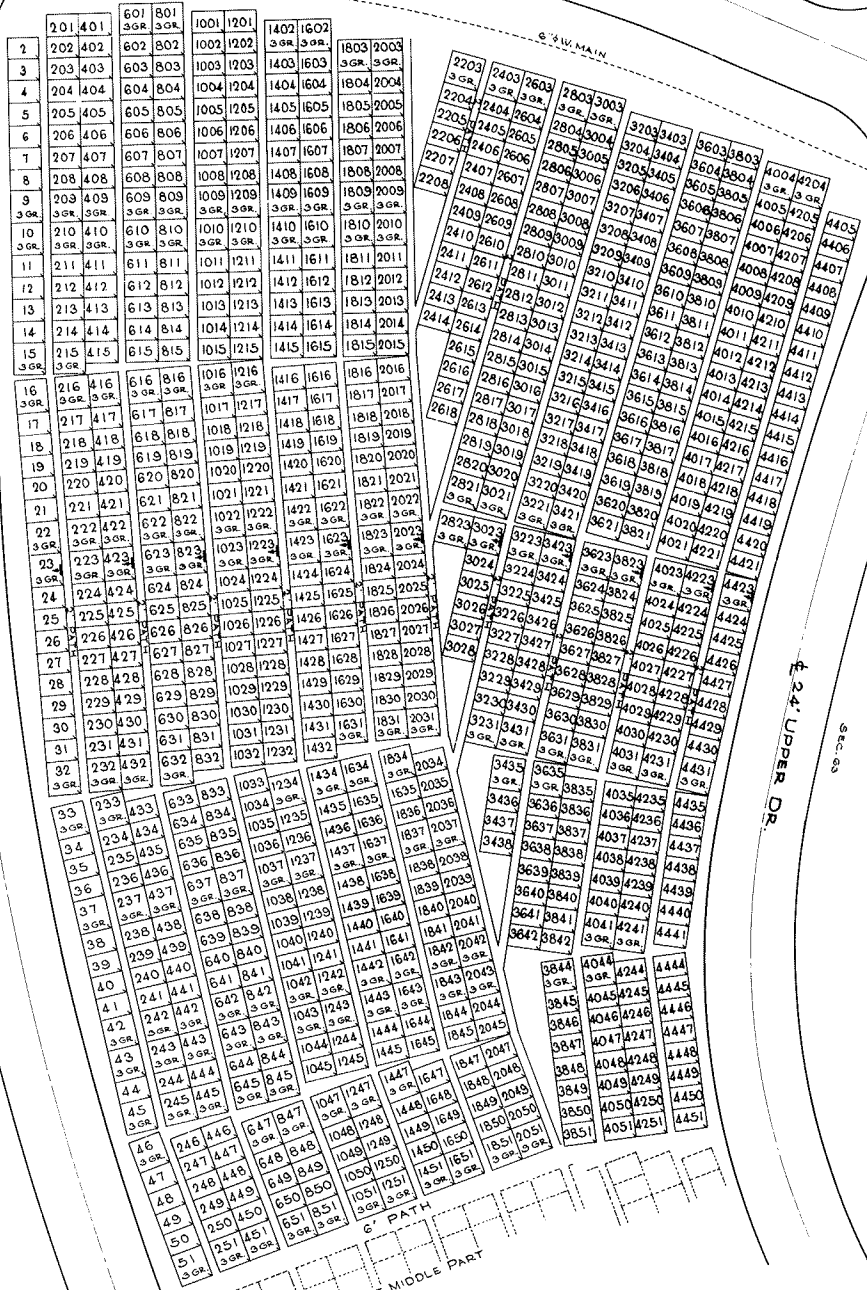
SEC. 63

6' PATH

SEE MIDDLE PART

REV. 03-11-62

CALVARY CEMETERY  
 WEST PART  
 SECTION 70  
 SCALE 1" = 20'  
 G.C.A. FEBRUARY, 1962



NOTE:  
 THE LOT NUMBER IS PLACED IN  
 THE UPPER RIGHT CORNER OF  
 THE LOT AS YOU FACE THE LOT  
 AND IS INDICATED THUS: [ ]  
 LOCATION OF GRAVE MARKERS  
 SHOWN THUS: [ ]  
 ARROW INDICATES DIRECTION GRAVE  
 MARKERS WILL FACE.  
 ALL LOTS ARE 2 GRAVE LOTS EXCEPT  
 WHERE OTHERWISE NOTED.  
 ALL 3 GRAVE LOTS ARE 6' x 9'.  
 LOT SUMMARY  
 348 2 GRAVE LOTS  
 88 3 GRAVE LOTS  
 98 TOTAL LOTS