

SEE SECTION 65 - WEST PART

SEE SECTION 64

SEE SECTION 62

24' DRIVE

DRIVE

24' DRIVE

CALVARY CEMETERY
EAST PART OF
SECTION 65

Scale 1"=20'
 E.J.M. July 15, 1919
 NUMBERED LOT MARKERS ARE LOCATED IN UPPER RIGHT HAND CORNER OF EACH LOT. UNNUMBERED MARKERS ARE LOCATED IN LOWER LEFT HAND CORNER OF EACH LOT. UNNUMBERED MARKERS ARE TO BE OCCUPIED BY THE BURIAL SOCIETY. UNNUMBERED MARKERS ARE TO BE OCCUPIED BY THE BURIAL SOCIETY. UNNUMBERED MARKERS ARE TO BE OCCUPIED BY THE BURIAL SOCIETY.
 ALL LOTS ARE 2 GRAVE LOTS EXCEPT WHERE OTHERWISE NOTED.
 ALL 2 GRAVE LOTS ARE 9'x9'

SEE SECTION 7C.

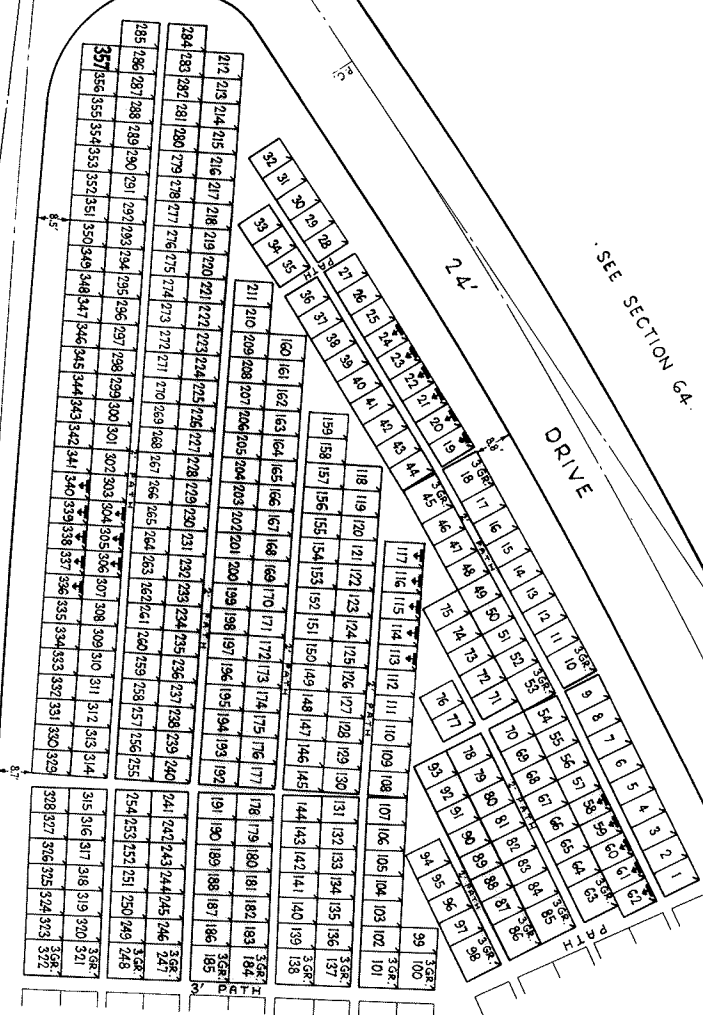
SEE SECTION 6A.

SEE SECTION 82.

24' DRIVE

24'

DRIVE



SEE SECTION 65 - EAST PART.

CALVARY CEMETERY
WEST PART OF
SECTION 65.

Scale 1" = 40'

E. J. M.

June 1, 1949

NUMBERED LOT MARKERS ARE LOCATED IN UPPER RIGHT HAND CORNER OF EACH LOT. UNNUMBERED MARKERS ARE TO BE LOCATED AS INDICATED BY ARROWS.
ALL LOTS ARE 2 GRAVE LOTS EXCEPT WHERE OTHERWISE NOTED.
ALL 2 GRAVE LOTS ARE 6'x6'
" " " " " " 9'x9'