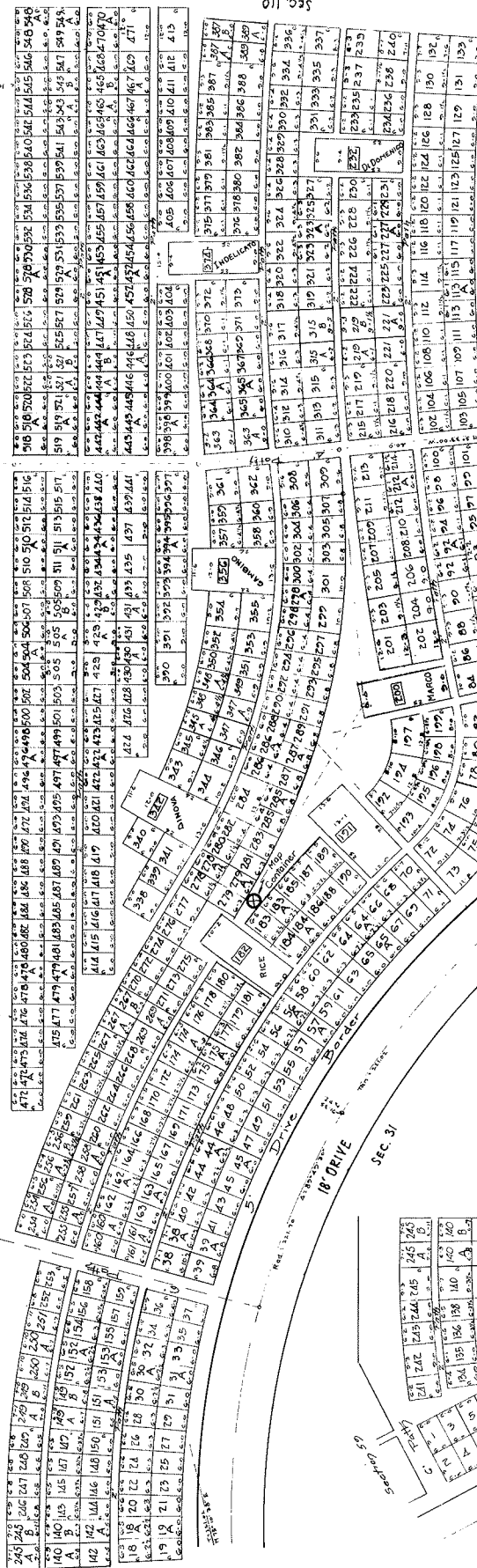
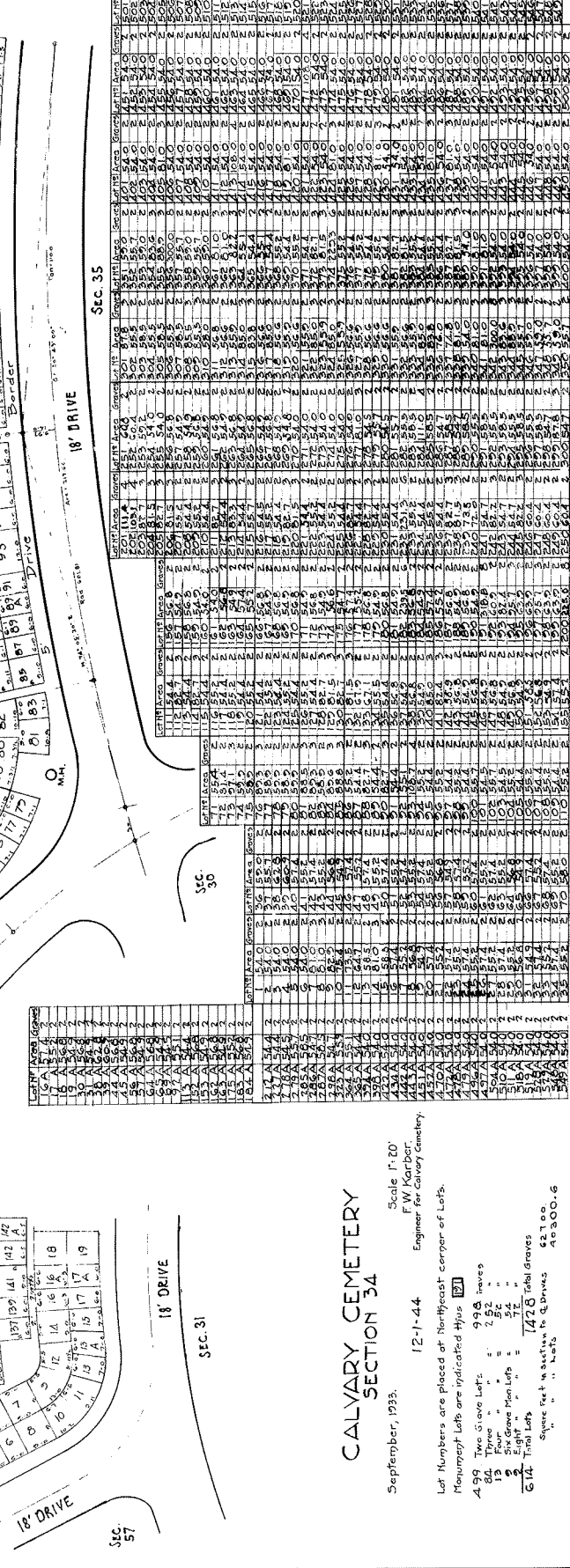


Section 59

Northern Line of Calvary Cemetery



Lot	Area	Value
1	1.00	1.00
2	1.00	1.00
3	1.00	1.00
4	1.00	1.00
5	1.00	1.00
6	1.00	1.00
7	1.00	1.00
8	1.00	1.00
9	1.00	1.00
10	1.00	1.00
11	1.00	1.00
12	1.00	1.00
13	1.00	1.00
14	1.00	1.00
15	1.00	1.00
16	1.00	1.00
17	1.00	1.00
18	1.00	1.00
19	1.00	1.00
20	1.00	1.00
21	1.00	1.00
22	1.00	1.00
23	1.00	1.00
24	1.00	1.00
25	1.00	1.00
26	1.00	1.00
27	1.00	1.00
28	1.00	1.00
29	1.00	1.00
30	1.00	1.00
31	1.00	1.00
32	1.00	1.00
33	1.00	1.00
34	1.00	1.00
35	1.00	1.00
36	1.00	1.00
37	1.00	1.00
38	1.00	1.00
39	1.00	1.00
40	1.00	1.00
41	1.00	1.00
42	1.00	1.00
43	1.00	1.00
44	1.00	1.00
45	1.00	1.00
46	1.00	1.00
47	1.00	1.00
48	1.00	1.00
49	1.00	1.00
50	1.00	1.00
51	1.00	1.00
52	1.00	1.00
53	1.00	1.00
54	1.00	1.00
55	1.00	1.00
56	1.00	1.00
57	1.00	1.00
58	1.00	1.00
59	1.00	1.00
60	1.00	1.00
61	1.00	1.00
62	1.00	1.00
63	1.00	1.00
64	1.00	1.00
65	1.00	1.00
66	1.00	1.00
67	1.00	1.00
68	1.00	1.00
69	1.00	1.00
70	1.00	1.00
71	1.00	1.00
72	1.00	1.00
73	1.00	1.00
74	1.00	1.00
75	1.00	1.00
76	1.00	1.00
77	1.00	1.00
78	1.00	1.00
79	1.00	1.00
80	1.00	1.00
81	1.00	1.00
82	1.00	1.00
83	1.00	1.00
84	1.00	1.00
85	1.00	1.00
86	1.00	1.00
87	1.00	1.00
88	1.00	1.00
89	1.00	1.00
90	1.00	1.00
91	1.00	1.00
92	1.00	1.00
93	1.00	1.00
94	1.00	1.00
95	1.00	1.00
96	1.00	1.00
97	1.00	1.00
98	1.00	1.00
99	1.00	1.00
100	1.00	1.00



Scale 1"=20'
 F.W. Korbner
 Engineer for Calvary Cemetery.

September, 1933.
 12-1-44
 Lot Numbers are placed at Northeast corner of Lots.
 Monuments are indicated thus [Symbol]
 499 Total Lots = 928
 84 Three " = 232
 19 Four " = 76
 3 Eight " = 24
 614 Total Lots = 747
 Square Feet in Section = 421,000
 Acres = 9.56