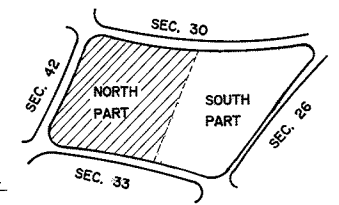


24' DRIVE

24' DRIVE

24' DRIVE



NOTE:  
THE LOT NUMBER IS PLACED IN THE  
UPPER RIGHT HAND CORNER OF LOTS  
AS YOU FACE THE LOTS AND IS  
INDICATED THUS

LOCATION OF GRAVE MARKER  
SHOWN THUS   
ARROW INDICATES DIRECTION  
GRAVE MARKER WILL FACE

ALL LOTS ARE 2 GRAVE LOTS EXCEPT  
WHERE OTHERWISE NOTED.

ALL 2 GRAVE LOTS ARE 6' x 9'  
ALL 3 GRAVE LOTS ARE 9' x 9'

LOT SUMMARY

1064	2 GRAVE LOTS
104	3 "
1188	TOTAL LOTS



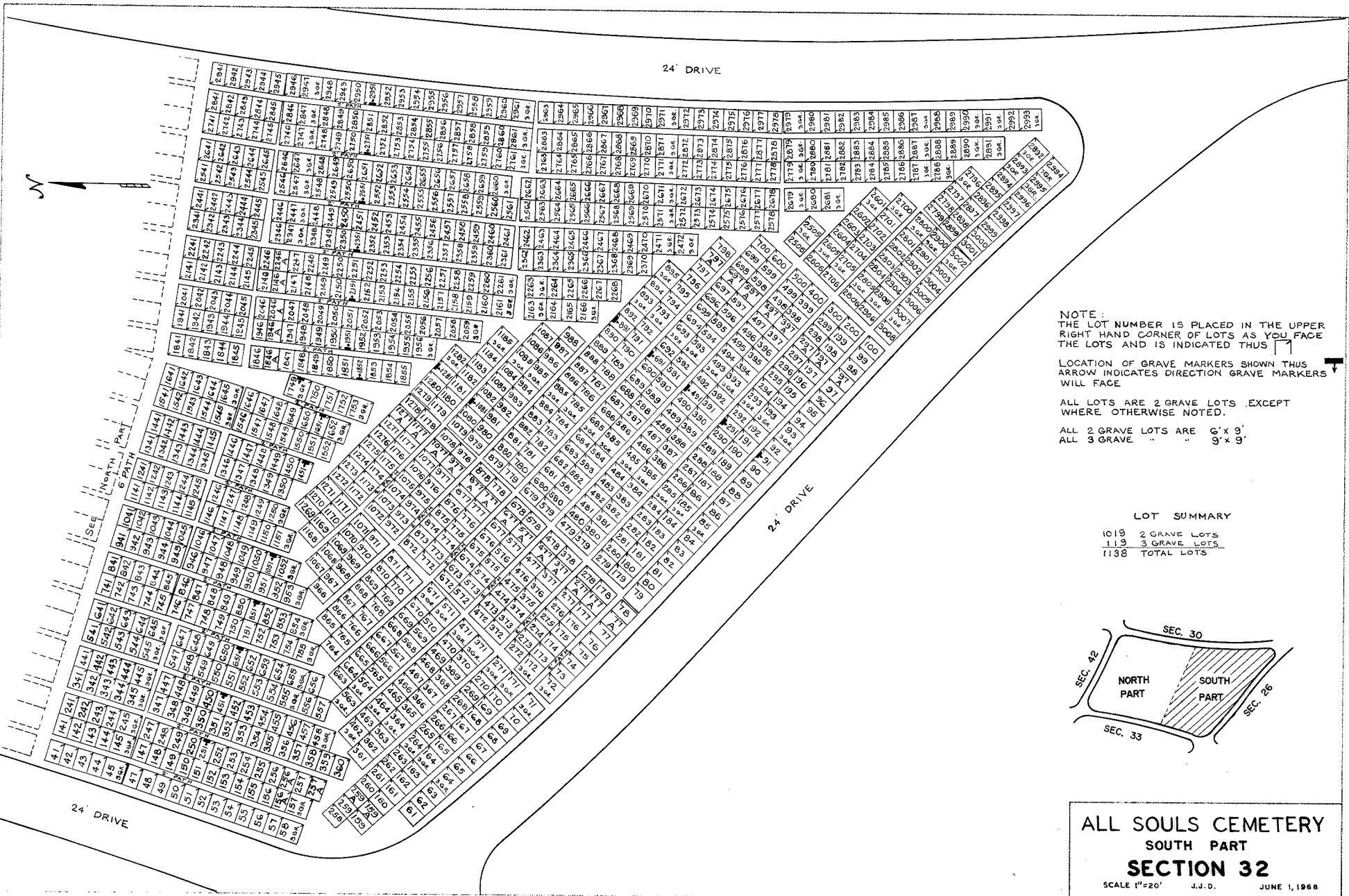
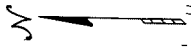
Rev. 12-1-76

**ALL SOULS CEMETERY**  
**NORTH PART**  
**SECTION 32**

SCALE 1" = 20' J.J.D. JUNE 1, 1968.

Rev. 12-1-76

24' DRIVE



NOTE:  
 THE LOT NUMBER IS PLACED IN THE UPPER  
 RIGHT HAND CORNER OF LOTS AS YOU FACE  
 THE LOTS AND IS INDICATED THUS ↗

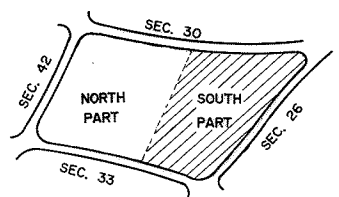
LOCATION OF GRAVE MARKERS SHOWN THUS  
 ↖ ARROW INDICATES DIRECTION GRAVE MARKERS  
 WILL FACE

ALL LOTS ARE 2 GRAVE LOTS EXCEPT  
 WHERE OTHERWISE NOTED.

ALL 2 GRAVE LOTS ARE 6' x 9'  
 ALL 3 GRAVE " " " 9' x 9'

LOT SUMMARY

1019	2 GRAVE LOTS
113	3 GRAVE LOTS
1138	TOTAL LOTS



**ALL SOULS CEMETERY**  
**SOUTH PART**  
**SECTION 32**  
 SCALE 1"=20' J.J.D. JUNE 1, 1968