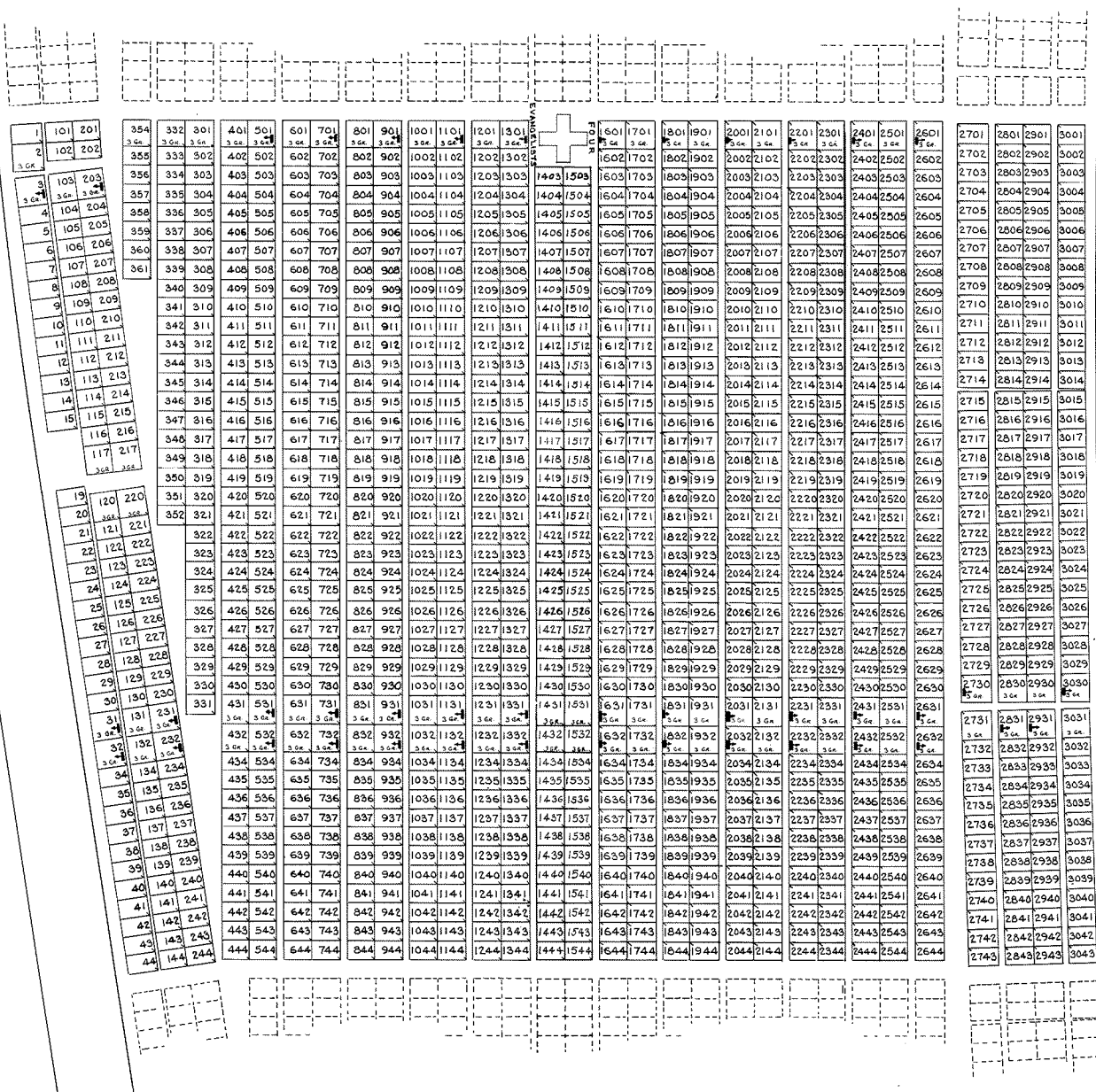


Sec. 26



Sec. 29

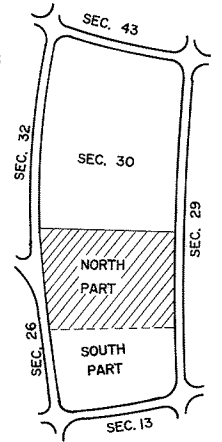
NOTE:
 THE LOT NUMBER IS PLACED IN THE UPPER
 RIGHT HAND CORNER OF LOTS AS YOU FACE
 THE LOT AND IS INDICATED THUS ↗

LOCATION OF GR. MARKER SHOWN THUS ↖
 ARROW INDICATES DIRECTION GRAVE
 MARKERS WILL FACE.

ALL LOTS ARE 2 GRAVE LOTS EXCEPT
 WHERE OTHERWISE NOTED.

ALL 2 GR. LOTS ARE 6' X 9'
 ALL 3 GR. LOTS ARE 9' X 9'

LOT SUMMARY
 125 3 2 GR. LOTS
 73 3 GR. LOTS
 1326 TOTAL LOTS



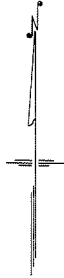
Sec. 26

REV. 0 6-26-87

ALL SOULS CEMETERY
 NORTH PART
SECTION 31

SCALE: 1" = 20' T.H. SEPT. 15, 1977

Sec. 29



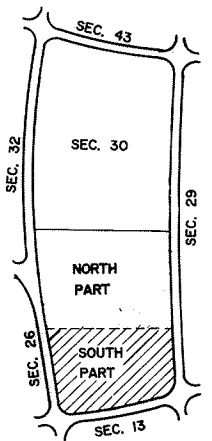
NOTE:
THE LOT NUMBER IS PLACED IN THE UPPER
RIGHT HAND CORNER OF LOTS AS YOU FACE
THE LOT AND IS INDICATED THUS

LOCATION OF GR. MARKER SHOWN THUS
ARROW INDICATES DIRECTION GRAVE
MARKERS WILL FACE.

ALL LOTS ARE 2 GRAVE LOTS EXCEPT
WHERE OTHERWISE NOTED.

ALL 2 GR. LOTS ARE 6' X 9'
ALL 3 GR. LOTS ARE 9' X 9'

LOT SUMMARY
744 2 GR. LOTS
35 3 GR. LOTS
779 TOTAL LOTS



REV. 4-21-87

ALL SOULS CEMETERY

SOUTH PART
SECTION 31

SCALE: 1" = 20' T.H. SEPT. 15, 1977

Sec. 26

Sec. 15

Sec. 13

