

Sec. 17

30' DRIVE

24' DRIVE

Sec. 32

24' DRIVE

Sec. 28

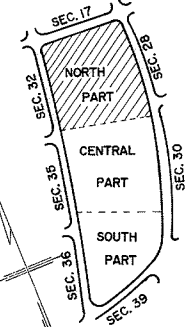


NOTE:
 THE LOT NUMBER IS PLACED IN THE UPPER RIGHT
 HAND CORNER OF LOT AS YOU FACE THE LOT
 AND IS INDICATED THUS [7]

LOCATION OF GR. MARKERS SHOWN THUS [square with cross]
 ARROW INDICATES DIRECTION GR. MARKERS FACE.
 ALL LOTS ARE 2 GR. LOTS EXCEPT AS NOTED.
 ALL 2 GRAVE LOTS ARE 6' X 9'
 ALL 3 GRAVE LOTS ARE 9' X 9'

LOT SUMMARY:
 1483 2 GR. LOTS
 66 3 GR. LOTS
 1549 TOTAL LOTS

3 N LOTS 3 THRU 43 O.D. BURIALS ONLY
 ARE PERMITTED.



HOLY CROSS CEMETERY
 CLEVELAND, OHIO
 NORTH PART
 SECTION 31



SEC. 30

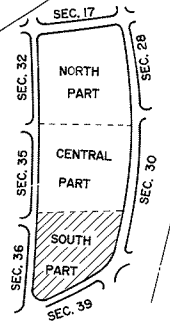
SEC. 36

NOTE:
 THE LOT NUMBER IS PLACED IN THE UPPER RIGHT
 HAND CORNER OF LOT AS YOU FACE THE LOT
 AND IS INDICATED THUS ↗

LOCATION OF GR. MARKERS SHOWN THUS ↕
 ARROW INDICATES DIRECTION GR. MARKERS FACE.
 ALL LOTS ARE 2 GR. LOTS EXCEPT AS NOTED.
 ALL 2 GRAVE LOTS ARE 6' X 9'
 ALL 3 GRAVE LOTS ARE 9' X 9'

LOT SUMMARY:
 1074 2 GR. LOTS
 56 3 GR. LOTS
 1130 TOTAL LOTS

HOLY CROSS CEMETERY
 CLEVELAND, OHIO
 SOUTH PART
 SECTION 31
 SCALE 1" = 20' D.J.B. APRIL 10, 1879



SEC. 39