

THE LOT NUMBER IS FOUND IN THE UPPER RIGHT HAND CORNER OF LOTS AS YOU FACE THE SECTION AND ARE INDICATED THUS [Symbol]

LOCATION OF GRAVE MARKERS SHOWN THUS [Symbol] ARROW INDICATES DIRECTION GRAVE MARKERS WILL FACE.

ALL LOTS ARE 2 GRAVE LOTS EXCEPT WHERE OTHERWISE NOTED.

ALL 2 GRAVE LOTS ARE 6'x9'  
 " 3 " " " 5'x9'

2 GRAVE LOTS = 904  
 3 GRAVE LOTS = 66  
 TOTAL = 970

Lot 1 to 878  
 Lot 4001 to 4041A  
 Lot 4042 to 4087A  
 Lot 4279A to 4308

**HOLY CROSS CEMETERY**  
 CLEVELAND, OHIO  
 NORTH PART OF  
**SECTION 17**  
 Scale 1"=20' G.C.A. 7-29-49

Rev. ③ 1-15-85  
 Rev. ② 2-23-75  
 Rev. 1 2-17-62

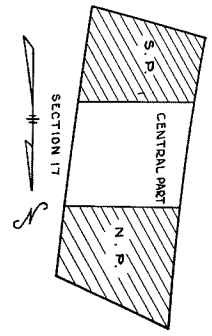
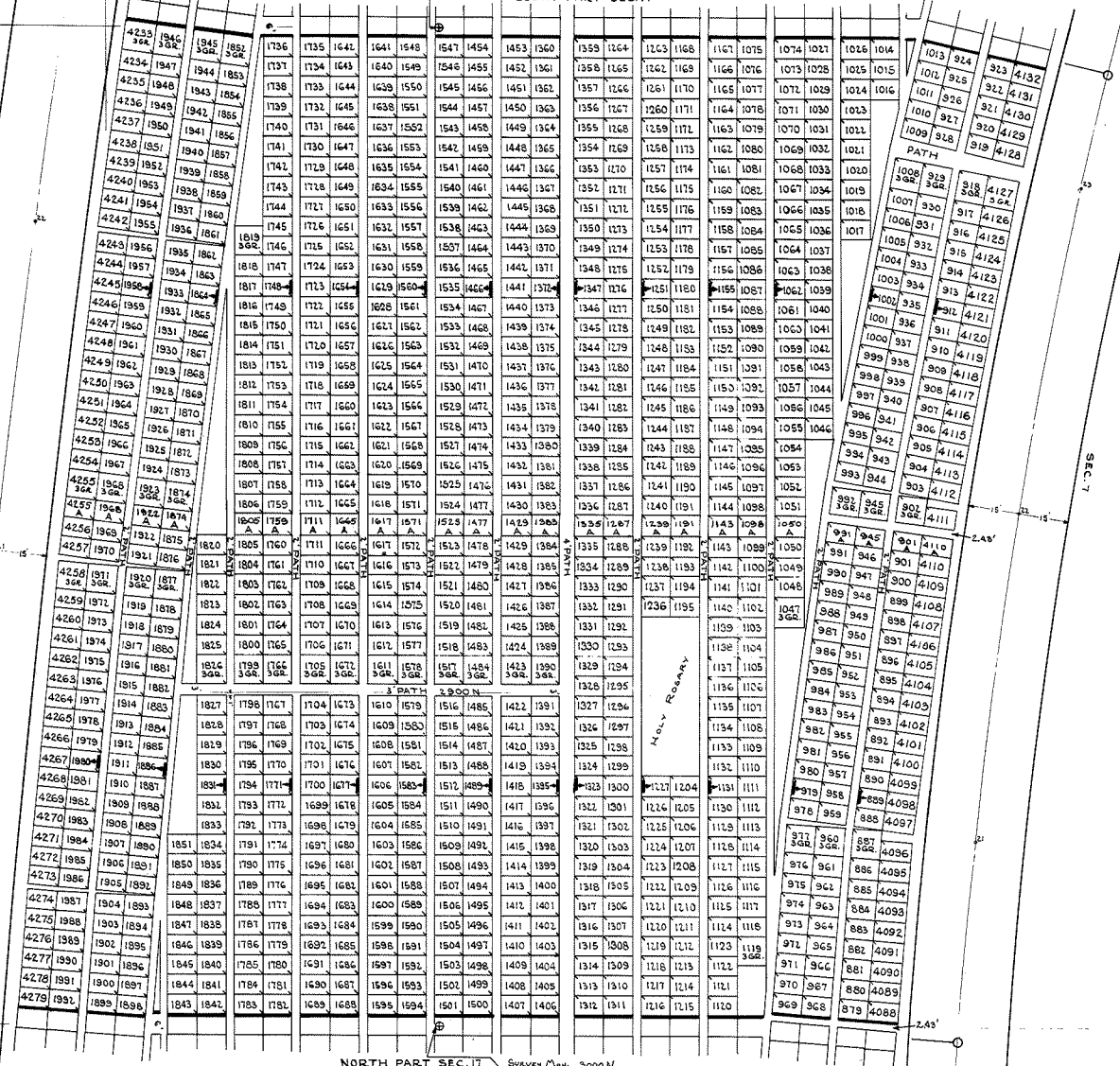
1100 N

Survey Map 2100 N  
12/10/02

SOUTH PART SEC. 17

SEC. 16

SEC. 7



THE LOT NUMBER IS FOUND IN THE UPPER RIGHT HAND CORNER OF LOTS AS YOU FACE THE SECTION AND ARE INDICATED THUS. [ ]

LOCATION OF GRAVE MARKERS SHOWN THUS [ ] WITH AN ARROW INDICATES DIRECTION GRAVE MARKERS WILL FACE.

ALL LOTS ARE 2 GRAVE LOTS EXCEPT WHERE OTHERWISE NOTED.  
ALL 2 GRAVE LOTS ARE 6'x5'  
3 9'x5'

2 GRAVE LOTS = 1129  
3 GRAVE LOTS = 36  
TOTAL = 1165

LOT 879 TO 1992  
LOT 4088 TO 4132  
LOT 4233 TO 4275

**HOLY CROSS CEMETERY**  
CLEVELAND, OHIO  
CENTRAL PART OF  
**SECTION 17**  
Scale 1"=20' G.C.A. T-6-49

REV. 1-15-05  
REV. 1-23-75  
REV. 1-2-17-02

3000 N

NORTH PART SEC. 17 Survey Map 3000 N  
12/10/02

