

# HOLY CROSS CEMETERY

CLEVELAND, OHIO  
NORTH PART

## SECTION 11

SCALE 1"=20' G.C.A. FEB. 1963

11  
N.P.

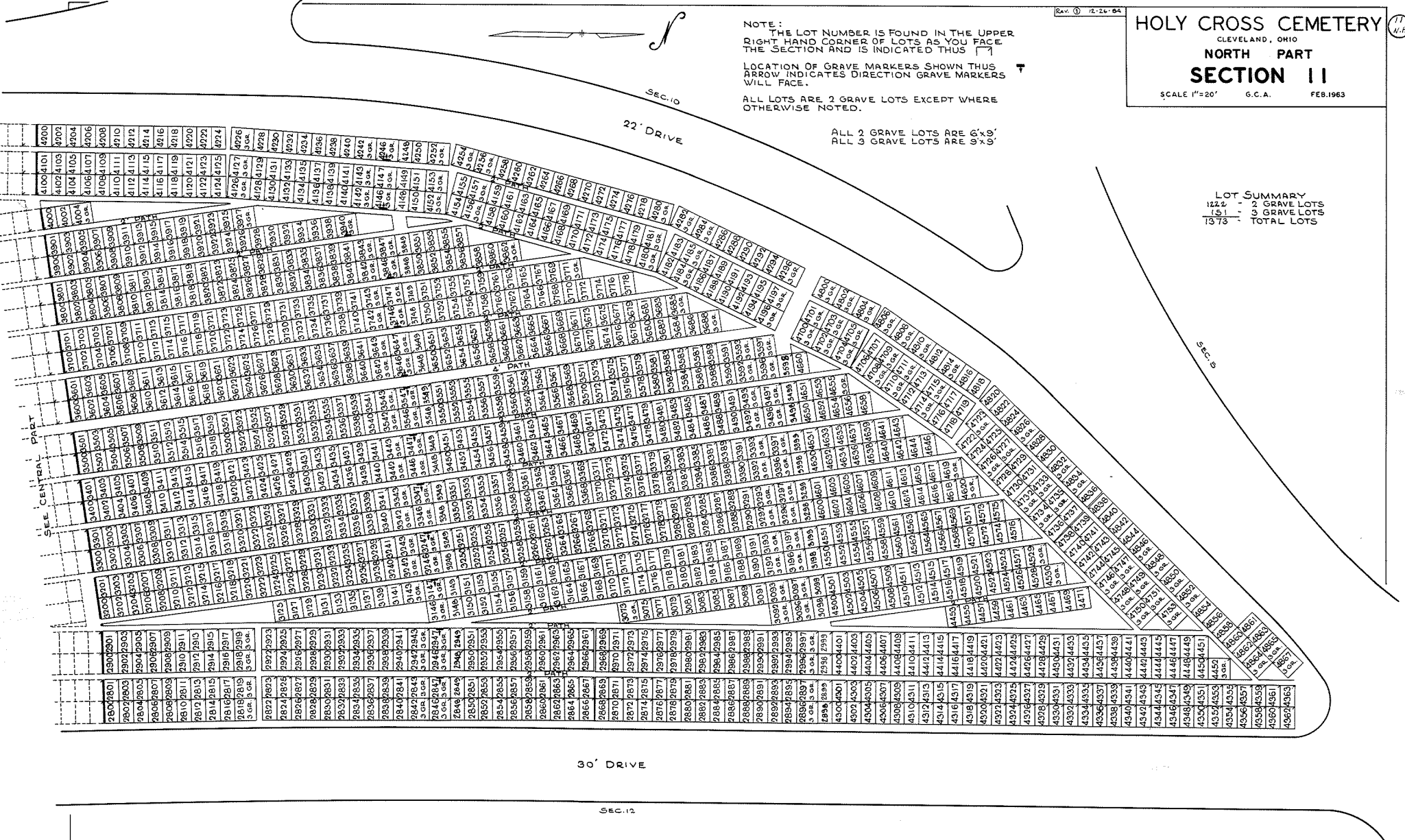
NOTE: THE LOT NUMBER IS FOUND IN THE UPPER RIGHT-HAND CORNER OF LOTS AS YOU FACE THE SECTION AND IS INDICATED THUS ↗

LOCATION OF GRAVE MARKERS SHOWN THUS ↗ ARROW INDICATES DIRECTION GRAVE MARKERS WILL FACE.

ALL LOTS ARE 2 GRAVE LOTS EXCEPT WHERE OTHERWISE NOTED.

ALL 3 GRAVE LOTS ARE 6' X 9'  
ALL 3 GRAVE LOTS ARE 9' X 9'

LOT SUMMARY  
1224 - 2 GRAVE LOTS  
151 - 3 GRAVE LOTS  
1373 - TOTAL LOTS



30' DRIVE

SEC. 12

SEC. 9

22' DRIVE



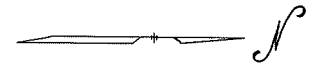
NOTE: THE LOT NUMBER IS FOUND IN THE UPPER RIGHT HAND CORNER OF LOTS AS YOU FACE THE SECTION AND IS INDICATED THUS ↗

LOCATION OF GRAVE MARKERS SHOWN THUS ↗ ARROW INDICATES DIRECTION GRAVE MARKERS WILL FACE.

ALL LOTS ARE 2 GRAVE LOTS EXCEPT WHERE OTHERWISE NOTED.

ALL 2 GRAVE LOTS ARE 6'x9'  
ALL 3 GRAVE LOTS ARE 9'x9'

LOT SUMMARY  
961 - 2 GRAVE LOTS  
149 - 3 GRAVE LOTS  
1110 - TOTAL LOTS



30' DRIVE

SEC. 12

HOLY CROSS CEMETERY  
CLEVELAND, OHIO  
CENTRAL PART  
SECTION 11

SCALE 1"=20' G.C.A. FEB. 1963

SEC. 9

22' DRIVE



NOTE:  
 THE LOT NUMBER IS FOUND IN THE UPPER RIGHT HAND CORNER OF LOTS AS YOU FACE THE SECTION AND IS INDICATED THUS. [ ]  
 LOCATION OF GRAVE MARKERS SHOWN THUS [ ]  
 ARROW INDICATES DIRECTION GRAVE MARKERS WILL FACE.

ALL LOTS ARE 2 GRAVE LOTS EXCEPT WHERE OTHERWISE NOTED.

ALL 2 GRAVE LOTS ARE 6'x9'  
 ALL 3 GRAVE LOTS ARE 9'x9'

LOT SUMMARY  
 723 - 2 GR. LOTS  
 114 - 3 GR. LOTS  
 837 - TOTAL LOTS

SEE CENTRAL PART.

30' DRIVE

SEC. 12

**HOLY CROSS CEMETERY**  
 CLEVELAND, OHIO  
**SOUTH PART**  
**SECTION 11**

SCALE 1"=20' G.C.A. FEB. 1963