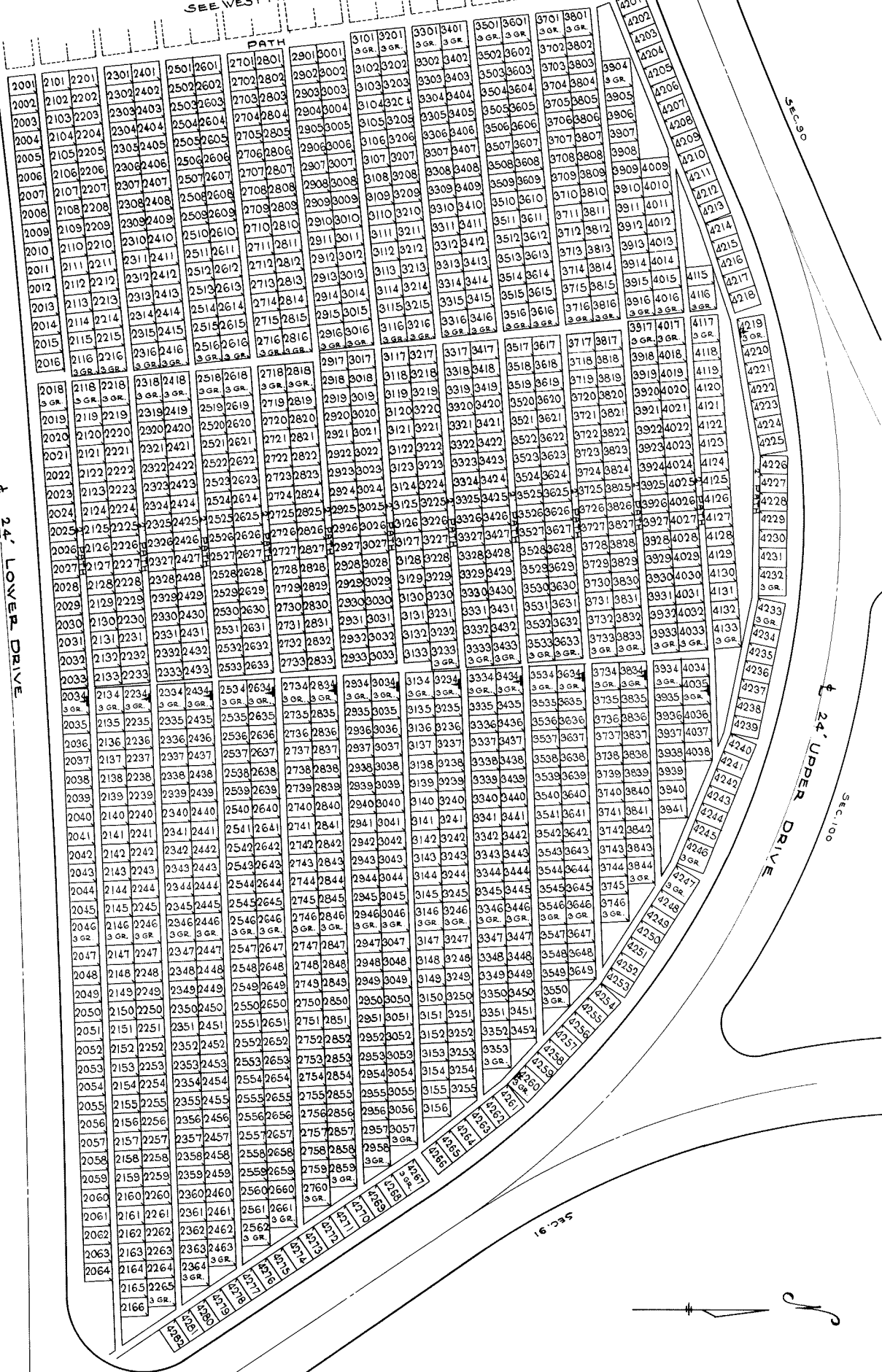


SEE WEST PART



NOTE:  
 THE LOT NUMBER IS PLACED IN THE UPPER RIGHT  
 HAND CORNER OF LOTS AS YOU FACE THE LOTS  
 AND IS INDICATED THUS [ ]

LOCATION OF GRAVE MARKERS SHOWN THUS T  
 ARROW INDICATES DIRECTION GRAVE MARKERS  
 WILL FACE.  
 ALL LOTS ARE 2 GRAVE LOTS EXCEPT WHERE  
 OTHERWISE NOTED.  
 ALL 2 GRAVE LOTS ARE 6'x9'.  
 ALL 3 GRAVE LOTS ARE 9'x9'

LOT SUMMARY  
 1175 2 GRAVE LOTS  
 119 3 GRAVE LOTS  
 1298 TOTAL LOTS

CALVARY CEMETERY  
 EAST PART  
 SECTION 95  
 SCALE 1"=20' G.C.A.  
 MAY 14, 1963

SEC. 90

24' UPPER DRIVE

24' DRIVE

24' LOWER DRIVE

NOTE: THE LOT NUMBER IS PLACED IN THE UPPER RIGHT HAND CORNER OF LOTS AS YOU FACE THE LOTS AND IS INDICATED THUS  $\nearrow$

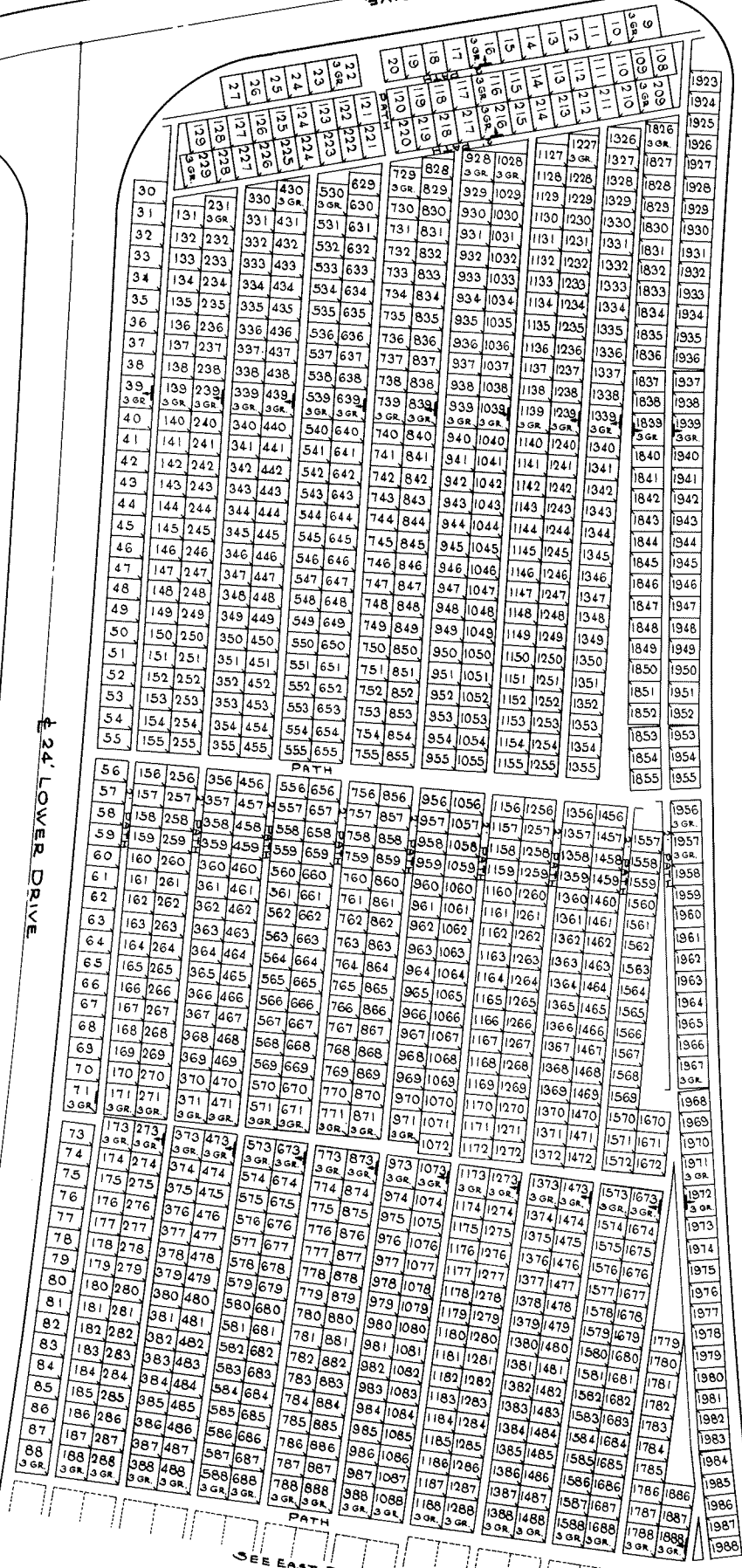
LOCATION OF GRAVE MARKERS SHOWN THUS  $\blacktriangledown$  ARROW INDICATES DIRECTION GRAVE MARKERS WILL FACE.

ALL LOTS ARE 2 GRAVE LOTS EXCEPT WHERE OTHERWISE NOTED.

ALL 2 GRAVE LOTS ARE 6'x9'

ALL 3 GRAVE LOTS ARE 9'x9'

LOT SUMMARY  
 1005 - 2 GR. LOTS  
 1006 - 3 GR. LOTS  
 1086 - TOTAL LOTS



CALVARY CEMETERY  
 WEST PART  
 SECTION 95

SCALE 1" = 20'  
 G.C.A.  
 MAY 14, 1983