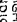
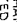


SEC. 77

24 DRIVE

SOUTH DRIVE

NUMERED LOT MARKER IS LOCATED IN THE UPPER
RIGHT HAND CORNER AS YOU FACE THE LOT AND IS
INDICATED THUS  GRAVE
GRAVE MARKERS TO BE LOCATED AT HEAD OF GRAVE
AND ARE INDICATED THUS  AND SHALL FACE IN
A DIRECTION AS GRAVE LOTS EXCEPT WHERE OTHERWISE
NOTED.

CALVARY CEMETERY
EAST PART OF
SECTION 82
APRIL 14, 1950

SCALE 1"=20' G.C.A.

LOT SUMMARY
691 - 20 GR LOTS
28 - 3 GR LOTS
709 - TOTAL LOTS

ALL 2 GRAVE LOTS ARE 6'x9'
3 " " " " 5'x9'

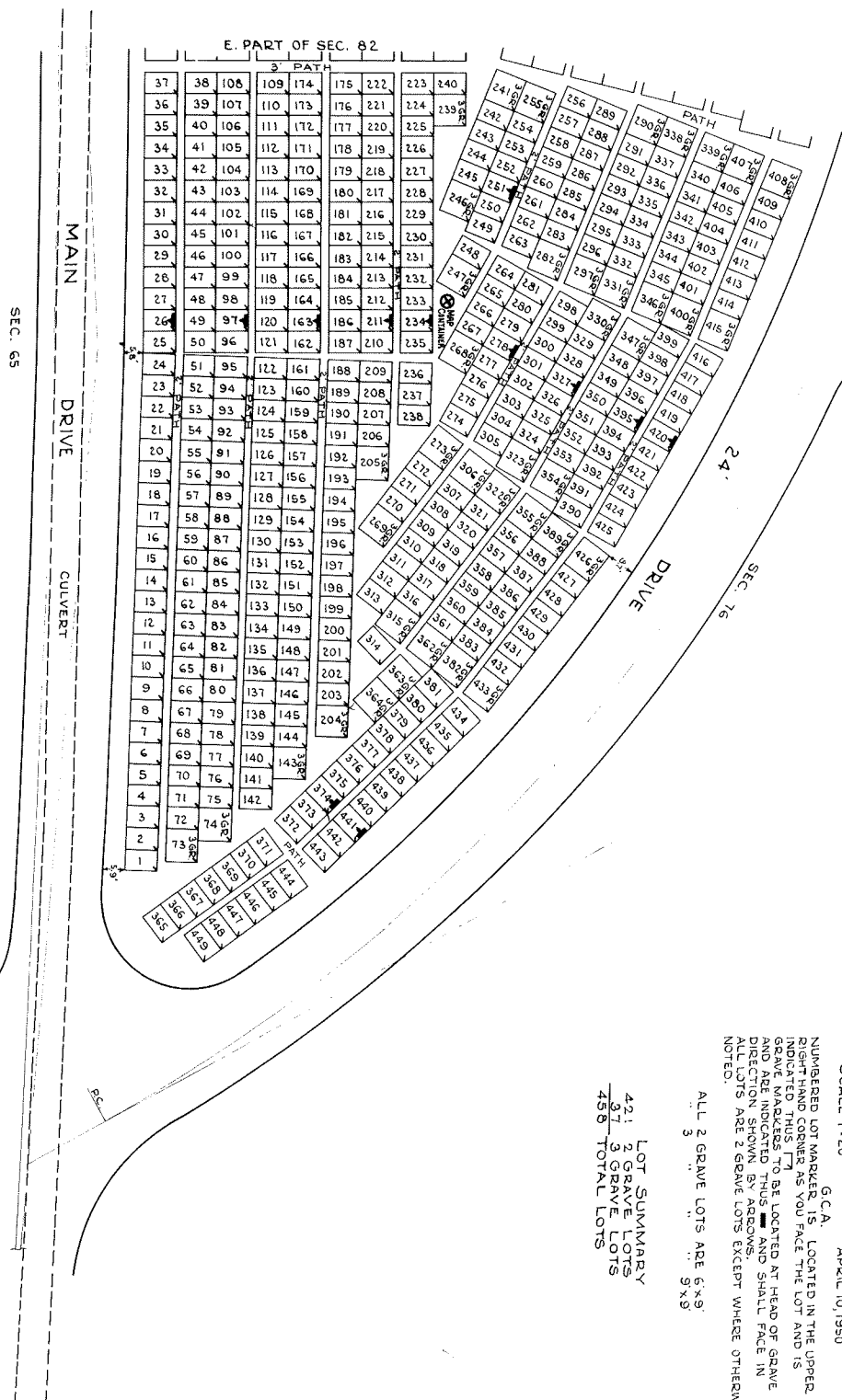
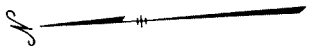


W. PART SEC. 82

SEC. 65

P1

P1



LOT SUMMARY
 421 GRAVE LOTS
 51 3 GRAVE LOTS
 450 TOTAL LOTS

ALL 3 GRAVE LOTS ARE 6'x9'
 3 5'x9'

CALVARY CEMETERY
 WEST PART OF
SECTION 82
 SCALE 1"=20'
 APRIL 10, 1950
 G.C.A.
 NUMBERED LOT MARKER IS LOCATED IN THE UPPER
 RIGHT HAND CORNER AS YOU FACE THE LOT AND IS
 INDICATED BY AN ARROW. GRAVE MARKERS TO BE
 LOCATED AT HEAD OF GRAVE AND ARE INDICATED
 BY SMALL SQUARE AND DIRECTION SHOWN BY
 ARROWS. ALL LOTS ARE 2 GRAVE LOTS EXCEPT
 WHERE OTHERWISE NOTED.