

CALVARY CEMETERY
PART OF SECTION 5

Jan. 1909. The Wth H Evers Eng. Co.
Scale: 1 inch = 20 feet

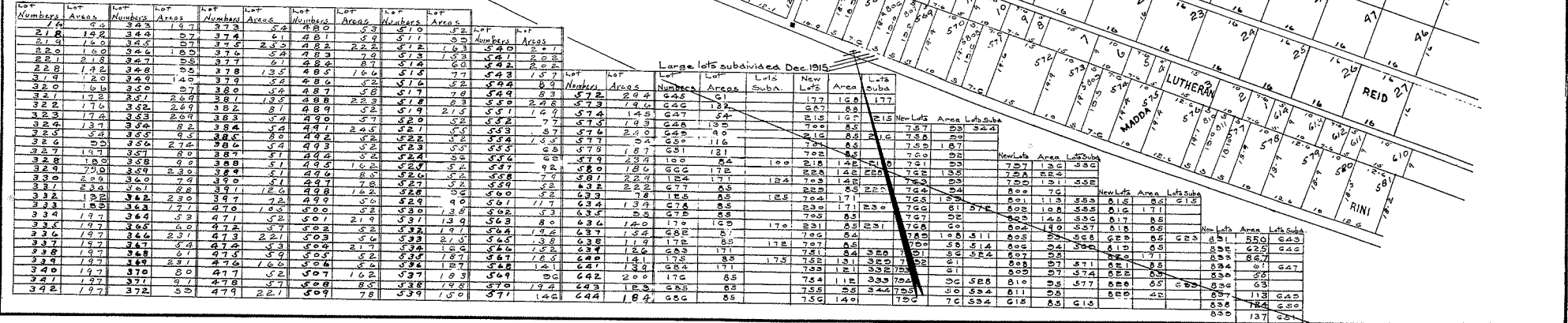
Lot numbers are placed on markers at upper right hand corner of lots facing center of Section in the same position as shown on plan. The path between lots 615 & 100 & 626 & 175 being used as center of Section. Dimensions of lots are shown in feet and inches.

• Represent survey monuments

All paths are 2 feet wide

All lot areas are shown in table except lots measuring 32 x 16 = 512 sq. ft

- 14 x 16 = 256
- 8 x 16 = 128
- 8 x 10 = 80
- 8 x 20 = 160
- 15 x 9 = 135
- 10 x 9 = 90
- 7 1/2 x 9 = 67 1/2
- 5 x 9 = 45



Lot Numbers	Lot Areas	Lot Numbers	Lot Areas	Lot Numbers	Lot Areas	Lot Numbers	Lot Areas	Lot Numbers	Lot Areas
174	5.2	273	1.97	274	5.2	480	5.3	527	1.97
175	1.82	374	2.7	375	6.1	481	5.7	528	2.7
176	1.42	376	2.83	377	2.52	482	2.2	529	2.83
221	2.1	378	1.05	379	5.4	483	2.2	530	1.05
222	2.1	379	1.05	380	5.4	484	2.2	531	1.05
223	1.42	381	1.05	382	5.4	485	2.2	532	1.05
224	1.42	383	1.05	384	5.4	486	2.2	533	1.05
225	1.42	385	1.05	386	5.4	487	2.2	534	1.05
319	1.20	387	1.45	388	2.8	488	2.2	535	1.45
320	1.6	389	1.45	390	2.8	489	2.2	536	1.45
321	1.72	391	1.45	392	2.8	490	2.2	537	1.45
322	1.72	393	1.45	394	2.8	491	2.2	538	1.45
323	1.72	395	1.45	396	2.8	492	2.2	539	1.45
324	1.72	397	1.45	398	2.8	493	2.2	540	1.45
325	1.72	399	1.45	400	2.8	494	2.2	541	1.45
326	1.72	401	1.45	402	2.8	495	2.2	542	1.45
327	1.72	403	1.45	404	2.8	496	2.2	543	1.45
328	1.72	405	1.45	406	2.8	497	2.2	544	1.45
329	1.72	407	1.45	408	2.8	498	2.2	545	1.45
330	1.72	409	1.45	410	2.8	499	2.2	546	1.45
331	1.72	411	1.45	412	2.8	500	2.2	547	1.45
332	1.72	413	1.45	414	2.8	501	2.2	548	1.45
333	1.72	415	1.45	416	2.8	502	2.2	549	1.45
334	1.72	417	1.45	418	2.8	503	2.2	550	1.45
335	1.72	419	1.45	420	2.8	504	2.2	551	1.45
336	1.72	421	1.45	422	2.8	505	2.2	552	1.45
337	1.72	423	1.45	424	2.8	506	2.2	553	1.45
338	1.72	425	1.45	426	2.8	507	2.2	554	1.45
339	1.72	427	1.45	428	2.8	508	2.2	555	1.45
340	1.72	429	1.45	430	2.8	509	2.2	556	1.45
341	1.72	431	1.45	432	2.8	510	2.2	557	1.45
342	1.72	433	1.45	434	2.8	511	2.2	558	1.45

