

Lot No.	Area	Graves	Lot No.	Area	Graves	Lot No.	Area	Graves	Lot No.	Area	Graves	Lot No.	Area	Graves
415A	54.5	2	384	108.1	4	415	51.3	3	455	51.4	3	500	54.5	2
416A	55.6	2	385	55.1	2	416	52.3	3	456	52.1	3	501	51.4	3
417A	57.8	2	386	54.5	2	417	53.4	2	457	52.2	2	502	52.1	3
418A	57.8	2	387	55.6	2	418	54.5	2	458	54.2	2	503	54.2	3
419A	59.6	2	388	55.6	2	419	55.6	2	459	54.5	2	504	54.5	2
420A	60.2	2	389	55.6	2	420	55.6	2	460	54.5	2	505	54.5	2
421A	60.2	2	390	55.6	2	421	55.6	2	461	54.5	2	506	54.5	2
422A	60.2	2	391	55.6	2	422	54.4	2	462	54.4	2	507	54.4	2
423A	60.2	2	392	55.6	2	423	54.4	2	463	54.4	2	508	54.4	2
424A	60.2	2	393	55.6	2	424	54.4	2	464	54.4	2	509	54.4	2
425A	60.2	2	394	55.6	2	425	54.4	2	465	54.4	2	510	54.4	2
426A	60.2	2	395	55.6	2	426	54.4	2	466	54.4	2	511	54.4	2
427A	60.2	2	396	55.6	2	427	54.4	2	467	54.4	2	512	54.4	2
428A	60.2	2	397	55.6	2	428	54.4	2	468	54.4	2	513	54.4	2
429A	60.2	2	398	55.6	2	429	54.4	2	469	54.4	2	514	54.4	2
430A	60.2	2	399	55.6	2	430	54.4	2	470	54.4	2	515	54.4	2
431A	60.2	2	400	55.6	2	431	54.4	2	471	54.4	2	516	54.4	2
432A	60.2	2	401	55.6	2	432	54.4	2	472	54.4	2	517	54.4	2
433A	60.2	2	402	55.6	2	433	54.4	2	473	54.4	2	518	54.4	2
434A	60.2	2	403	55.6	2	434	54.4	2	474	54.4	2	519	54.4	2
435A	60.2	2	404	55.6	2	435	54.4	2	475	54.4	2	520	54.4	2
436A	60.2	2	405	55.6	2	436	54.4	2	476	54.4	2	521	54.4	2
437A	60.2	2	406	55.6	2	437	54.4	2	477	54.4	2	522	54.4	2
438A	60.2	2	407	55.6	2	438	54.4	2	478	54.4	2	523	54.4	2
439A	60.2	2	408	55.6	2	439	54.4	2	479	54.4	2	524	54.4	2
440A	60.2	2	409	55.6	2	440	54.4	2	480	54.4	2	525	54.4	2
441A	60.2	2	410	55.6	2	441	54.4	2	481	54.4	2	526	54.4	2
442A	60.2	2	411	55.6	2	442	54.4	2	482	54.4	2	527	54.4	2
443A	60.2	2	412	55.6	2	443	54.4	2	483	54.4	2	528	54.4	2
444A	60.2	2	413	55.6	2	444	54.4	2	484	54.4	2	529	54.4	2
445A	60.2	2	414	55.6	2	445	54.4	2	485	54.4	2	530	54.4	2

CALVARY CEMETERY

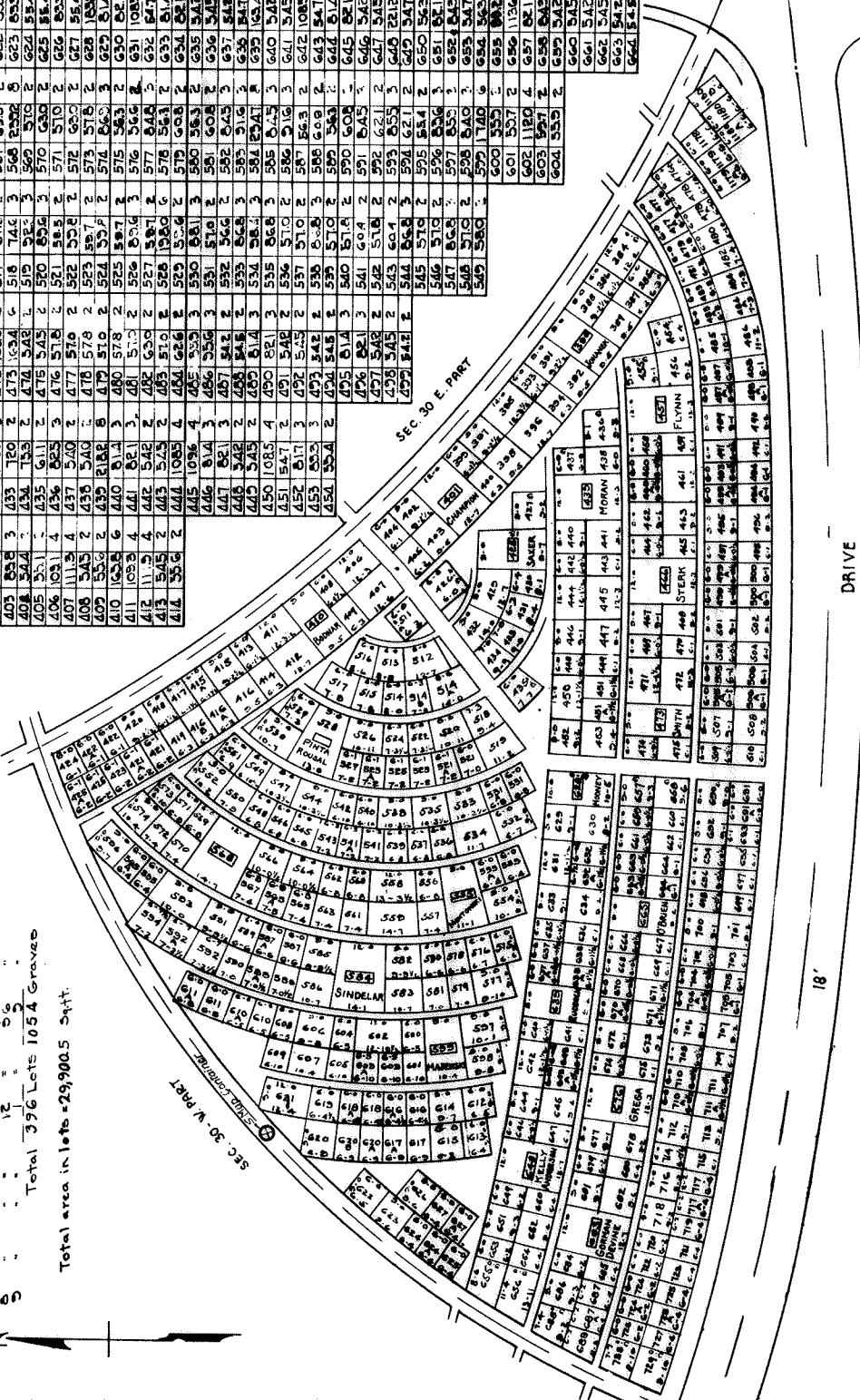
SECTION 30 SOUTH PART

Scale 1" = 20' April, 1926.
The Wm. H. Evers Engineering Co.
Note: Lot numbers are placed in upper right hand corner facing center.
Rev. 6-1-20

SUMMARY

2 Grave Lots: 246
 3 Grave Lots: 107
 4 Grave Lots: 18
 5 Grave Lots: 12

Total area in lots = 29,900.5 Sq. Ft.



SEC. 28

18'

DRIVE

SEC. 30 E. PART

SEC. 30 N. PART



SEC. 31

SEC. 30 - S. PART

SEC. 30 - S. PART

CALVARY CEMETERY
SECTION 30
NORTH EAST PART

Scale 1"=20'

SEC. 35



April, 1956
Rev. © Aug. 6, 1956

The Wm. H. Evers Engineering Co.

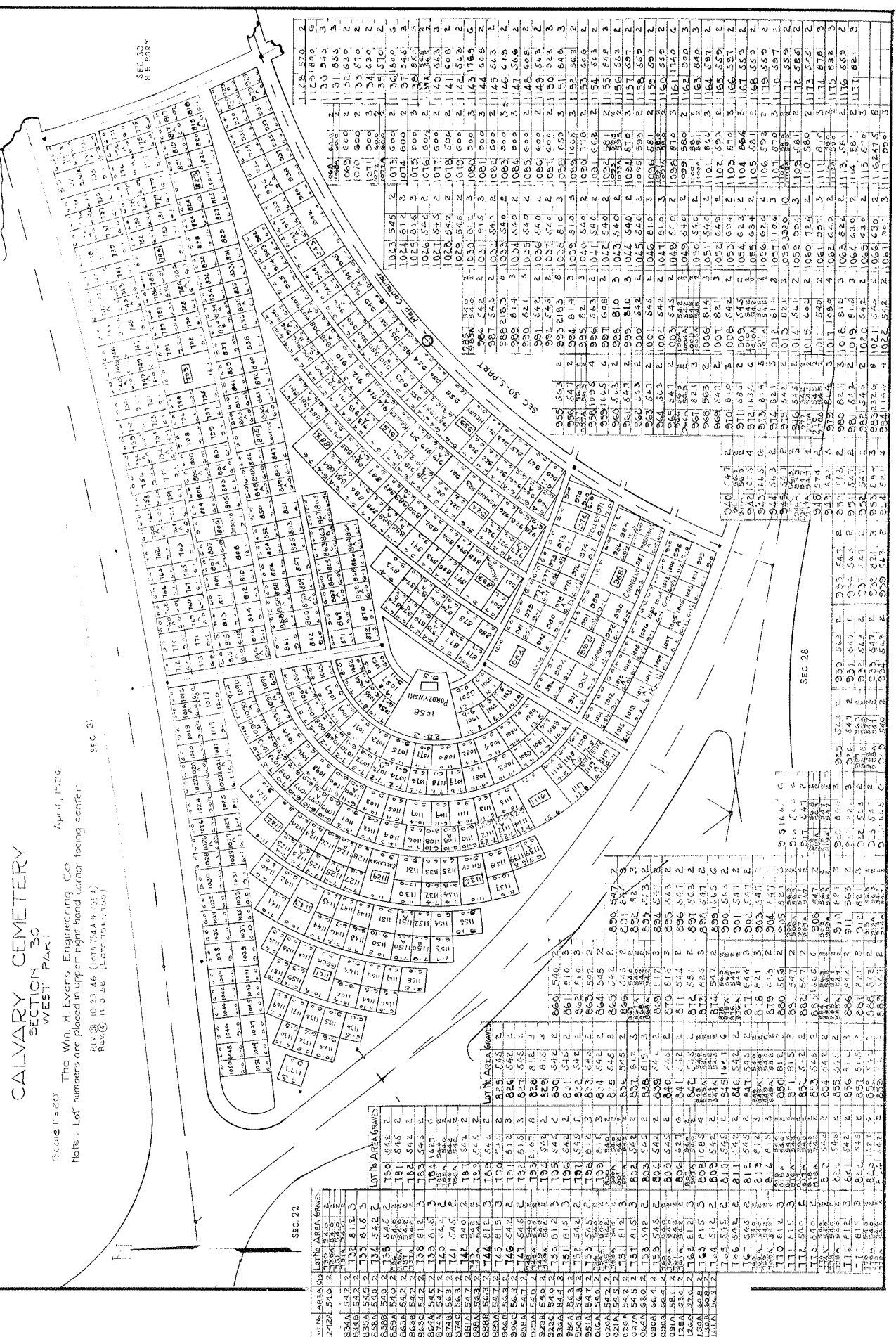
Note: Lot numbers are placed in upper right hand corner facing center.

CALVARY CEMETERY

SECTION 30 WEST PART

Scale 1"=60'
 The Wm. H. Evers Engineering Co.
 April, 1926.
 Notes: Lot numbers are placed in upper right hand corner facing center.

SEC 31



SEC 22

LOT NO.	AREA	ACRES
742A	540.2	2
834A	542.2	2
834B	542.2	2
834C	542.2	2
834D	542.2	2
834E	542.2	2
834F	542.2	2
834G	542.2	2
834H	542.2	2
834I	542.2	2
834J	542.2	2
834K	542.2	2
834L	542.2	2
834M	542.2	2
834N	542.2	2
834O	542.2	2
834P	542.2	2
834Q	542.2	2
834R	542.2	2
834S	542.2	2
834T	542.2	2
834U	542.2	2
834V	542.2	2
834W	542.2	2
834X	542.2	2
834Y	542.2	2
834Z	542.2	2

LOT NO.	AREA	ACRES
742A	540.2	2
834A	542.2	2
834B	542.2	2
834C	542.2	2
834D	542.2	2
834E	542.2	2
834F	542.2	2
834G	542.2	2
834H	542.2	2
834I	542.2	2
834J	542.2	2
834K	542.2	2
834L	542.2	2
834M	542.2	2
834N	542.2	2
834O	542.2	2
834P	542.2	2
834Q	542.2	2
834R	542.2	2
834S	542.2	2
834T	542.2	2
834U	542.2	2
834V	542.2	2
834W	542.2	2
834X	542.2	2
834Y	542.2	2
834Z	542.2	2

LOT NO.	AREA	ACRES
742A	540.2	2
834A	542.2	2
834B	542.2	2
834C	542.2	2
834D	542.2	2
834E	542.2	2
834F	542.2	2
834G	542.2	2
834H	542.2	2
834I	542.2	2
834J	542.2	2
834K	542.2	2
834L	542.2	2
834M	542.2	2
834N	542.2	2
834O	542.2	2
834P	542.2	2
834Q	542.2	2
834R	542.2	2
834S	542.2	2
834T	542.2	2
834U	542.2	2
834V	542.2	2
834W	542.2	2
834X	542.2	2
834Y	542.2	2
834Z	542.2	2

LOT NO.	AREA	ACRES
742A	540.2	2
834A	542.2	2
834B	542.2	2
834C	542.2	2
834D	542.2	2
834E	542.2	2
834F	542.2	2
834G	542.2	2
834H	542.2	2
834I	542.2	2
834J	542.2	2
834K	542.2	2
834L	542.2	2
834M	542.2	2
834N	542.2	2
834O	542.2	2
834P	542.2	2
834Q	542.2	2
834R	542.2	2
834S	542.2	2
834T	542.2	2
834U	542.2	2
834V	542.2	2
834W	542.2	2
834X	542.2	2
834Y	542.2	2
834Z	542.2	2

LOT NO.	AREA	ACRES
742A	540.2	2
834A	542.2	2
834B	542.2	2
834C	542.2	2
834D	542.2	2
834E	542.2	2
834F	542.2	2
834G	542.2	2
834H	542.2	2
834I	542.2	2
834J	542.2	2
834K	542.2	2
834L	542.2	2
834M	542.2	2
834N	542.2	2
834O	542.2	2
834P	542.2	2
834Q	542.2	2
834R	542.2	2
834S	542.2	2
834T	542.2	2
834U	542.2	2
834V	542.2	2
834W	542.2	2
834X	542.2	2
834Y	542.2	2
834Z	542.2	2

LOT NO.	AREA	ACRES
742A	540.2	2
834A	542.2	2
834B	542.2	2
834C	542.2	2
834D	542.2	2
834E	542.2	2
834F	542.2	2
834G	542.2	2
834H	542.2	2
834I	542.2	2
834J	542.2	2
834K	542.2	2
834L	542.2	2
834M	542.2	2
834N	542.2	2
834O	542.2	2
834P	542.2	2
834Q	542.2	2
834R	542.2	2
834S	542.2	2
834T	542.2	2
834U	542.2	2
834V	542.2	2
834W	542.2	2
834X	542.2	2
834Y	542.2	2
834Z	542.2	2

LOT NO.	AREA	ACRES
742A	540.2	2
834A	542.2	2
834B	542.2	2
834C	542.2	2
834D	542.2	2
834E	542.2	2
834F	542.2	2
834G	542.2	2
834H	542.2	2
834I	542.2	2
834J	542.2	2
834K	542.2	2
834L	542.2	2
834M	542.2	2
834N	542.2	2
834O	542.2	2
834P	542.2	2
834Q	542.2	2
834R	542.2	2
834S	542.2	2
834T	542.2	2
834U	542.2	2
834V	542.2	2
834W	542.2	2
834X	542.2	2
834Y	542.2	2
834Z	542.2	2

LOT NO.	AREA	ACRES
742A	540.2	2
834A	542.2	2
834B	542.2	2
834C	542.2	2
834D	542.2	2
834E	542.2	2
834F	542.2	2
834G	542.2	2
834H	542.2	2
834I	542.2	2
834J	542.2	2
834K	542.2	2
834L	542.2	2
834M	542.2	2
834N	542.2	2
834O	542.2	2
834P	542.2	2
834Q	542.2	2
834R	542.2	2
834S	542.2	2
834T	542.2	2
834U	542.2	2
834V	542.2	2
834W	542.2	2
834X	542.2	2
834Y	542.2	2
834Z	542.2	2

LOT NO.	AREA	ACRES
742A	540.2	2
834A	542.2	2
834B	542.2	2
834C	542.2	2
834D	542.2	2
834E	542.2	2
834F	542.2	2
834G	542.2	2
834H	542.2	2
834I	542.2	2
834J	542.2	2
834K	542.2	2
834L	542.2	2
834M	542.2	2
834N	542.2	2
834O	542.2	2
834P	542.2	2
834Q	542.2	2
834R	542.2	2
834S	542.2	2
834T	542.2	2
834U	542.2	2
834V	542.2	2
834W	542.2	2
834X	542.2	2
834Y	542.2	2
834Z	542.2	2

LOT NO.	AREA	ACRES
742A	540.2	2
834A	542.2	2
834B	542.2	2
834C	542.2	2
834D	542.2	2
834E	542.2	2
834F	542.2	2
834G	542.2	2
834H	542.2	2
834I	542.2	2
834J	542.2	2
834K	542.2	2
834L	542.2	2
834M	542.2	2
834N	542.2	2
834O	542.2	2
834P	542.2	2
834Q	542.2	2
834R	542.2	2
834S	542.2	2
834T	542.2	2
834U	542.2	2
834V	542.2	2
834W	542.2	2
834X	542.2	2
834Y	542.2	2
834Z	542.2	2

LOT NO.	AREA	ACRES
742A	540.2	2
834A	542.2	2
834B	542.2	2
834C	542.2	2
834D	542.2	2
834E	542.2	2
834F	542.2	2
834G	542.2	2
834H	542.2	2
834I	542.2	2
834J	542.2	2
834K	542.2	2
834L	542.2	2
834M	542.2	2
834N	542.2	2
834O	542.2	2
834P	542.2	2
834Q	542.2	2
834R	542.2	2
834S	542.2	2
834T	542.2	2
834U	542.2	2
834V	542.2	2
834W	542.2	2
834X	542.2	2
834Y	542.2	2
834Z	542.2	2

LOT NO.	AREA	ACRES
742A	540.2	2
834A	542.2	2
834B	542.2	2
834C	542.2	2
834D	542.2	2
834E	542.2	2
834F	542.2	2
834G	542.2	2
834H	542.2	2
834I	542.2	2
834J	542.2	2
834K	542.2	2
834L	542.2	2
834M	542.2	2
834N	542.2	2
834O	542.2	2
834P	542.2	2
834Q	542.2	2
834R	542.2	2
834S	542.2	2
834T	542.2	2
834U	542.2	2
834V	542.2	2
834W	542.2	2
834X	542.2	2
834Y	542.2	2
834Z	542.2	2

Released by Eng. Dept 1928