

22
N.W.

22
N.W.

No.	Area	Graves	No.	Area	Graves
1	121	4	126	144	4
2	122	2	127	144	4
3	123	2	128	144	4
4	124	2	129	144	4
5	125	2	130	144	4
6	126	2	131	144	4
7	127	2	132	144	4
8	128	2	133	144	4
9	129	2	134	144	4
10	130	2	135	144	4
11	131	2	136	144	4
12	132	2	137	144	4
13	133	2	138	144	4
14	134	2	139	144	4
15	135	2	140	144	4
16	136	2	141	144	4
17	137	2	142	144	4
18	138	2	143	144	4
19	139	2	144	144	4
20	140	2	145	144	4

Large Deane's Lots Re-measured Oct. 1925

No.	Area	Graves	No.	Area	Graves
1	146	2	151	150	3
2	147	2	152	150	3
3	148	2	153	150	3
4	149	2	154	150	3
5	150	2	155	150	3
6	151	2	156	150	3
7	152	2	157	150	3
8	153	2	158	150	3
9	154	2	159	150	3
10	155	2	160	150	3
11	156	2	161	150	3
12	157	2	162	150	3
13	158	2	163	150	3
14	159	2	164	150	3
15	160	2	165	150	3
16	161	2	166	150	3
17	162	2	167	150	3
18	163	2	168	150	3
19	164	2	169	150	3
20	165	2	170	150	3

No.	Area	Graves	No.	Area	Graves
1	171	2	176	150	3
2	172	2	177	150	3
3	173	2	178	150	3
4	174	2	179	150	3
5	175	2	180	150	3
6	176	2	181	150	3
7	177	2	182	150	3
8	178	2	183	150	3
9	179	2	184	150	3
10	180	2	185	150	3
11	181	2	186	150	3
12	182	2	187	150	3
13	183	2	188	150	3
14	184	2	189	150	3
15	185	2	190	150	3
16	186	2	191	150	3
17	187	2	192	150	3
18	188	2	193	150	3
19	189	2	194	150	3
20	190	2	195	150	3

No.	Area	Graves	No.	Area	Graves
1	196	2	201	150	3
2	197	2	202	150	3
3	198	2	203	150	3
4	199	2	204	150	3
5	200	2	205	150	3
6	201	2	206	150	3
7	202	2	207	150	3
8	203	2	208	150	3
9	204	2	209	150	3
10	205	2	210	150	3
11	206	2	211	150	3
12	207	2	212	150	3
13	208	2	213	150	3
14	209	2	214	150	3
15	210	2	215	150	3
16	211	2	216	150	3
17	212	2	217	150	3
18	213	2	218	150	3
19	214	2	219	150	3
20	215	2	220	150	3



CALVARY CEMETERY
CLEVELAND,
NORTH WEST PART SEC. N^o 22
THE W. H. EVERS & CO.
Sole Prop.

Jan. 1921
Note - All lot numbers are placed
in N.E. Cor. of Lots

SUMMARY

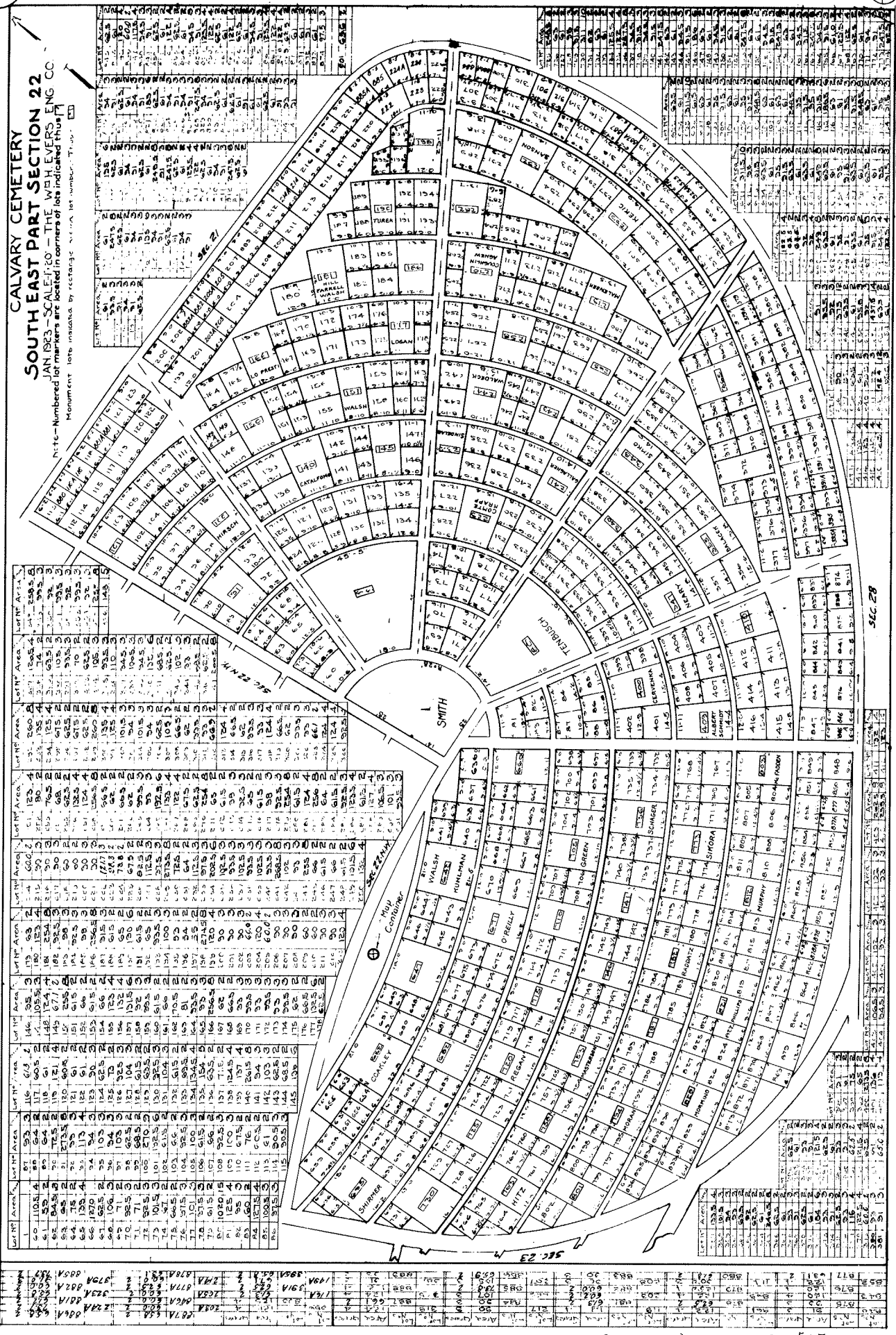
100	200	300	400	500	600	700	800	900	1000
3	4	5	6	7	8	9	10	11	12
13	14	15	16	17	18	19	20	21	22
23	24	25	26	27	28	29	30	31	32
33	34	35	36	37	38	39	40	41	42
43	44	45	46	47	48	49	50	51	52
53	54	55	56	57	58	59	60	61	62
63	64	65	66	67	68	69	70	71	72
73	74	75	76	77	78	79	80	81	82
83	84	85	86	87	88	89	90	91	92
93	94	95	96	97	98	99	100	101	102

No.	Area	Graves	No.	Area	Graves
417	415	14	506	61	2
418	416	14	507	62	2
419	417	14	508	63	2
420	418	14	509	64	2
421	419	14	510	65	2
422	420	14	511	66	2
423	421	14	512	67	2
424	422	14	513	68	2
425	423	14	514	69	2
426	424	14	515	70	2
427	425	14	516	71	2
428	426	14	517	72	2
429	427	14	518	73	2
430	428	14	519	74	2
431	429	14	520	75	2
432	430	14	521	76	2
433	431	14	522	77	2
434	432	14	523	78	2
435	433	14	524	79	2
436	434	14	525	80	2
437	435	14	526	81	2
438	436	14	527	82	2
439	437	14	528	83	2
440	438	14	529	84	2
441	439	14	530	85	2
442	440	14	531	86	2
443	441	14	532	87	2
444	442	14	533	88	2
445	443	14	534	89	2
446	444	14	535	90	2
447	445	14	536	91	2
448	446	14	537	92	2
449	447	14	538	93	2
450	448	14	539	94	2
451	449	14	540	95	2
452	450	14	541	96	2
453	451	14	542	97	2
454	452	14	543	98	2
455	453	14	544	99	2
456	454	14	545	100	2

CALVARY CEMETERY

SOUTH EAST PART SECTION 22

JAN 1923 - SCALE: 1" = 20' - THE HIGH LEVELS, ENG. CO.
 D116 - Numbered lot markers are located in corners of lots indicated thus []
 Monument lots indicated by rectangle. N.V.A. lot numbers. 1919.



CATHOLIC CEMETERY ASSOCIATION IS NOT RESPONSIBLE FOR ANY DISCREPANCIES OR PERSONAL EFFECTS LEFT ON GRAVES.

Lots Bored. Lots R's subdivided Oct 1923

Lot No.	Area	Lot No.	Area	Lot No.	Area	Lot No.	Area	Lot No.	Area	Lot No.	Area	Lot No.	Area
60	110.5	4	37	52	116	64	117	60.5	145	145	121	4	121
61	89	5	37	53	117	61	118	61.5	146	146	122	5	122
62	88.5	6	37	54	118	62	119	62.5	147	147	123	6	123
63	88	7	37	55	119	63	120	63.5	148	148	124	7	124
64	87.5	8	37	56	120	64	121	64.5	149	149	125	8	125
65	87	9	37	57	121	65	122	65.5	150	150	126	9	126
66	86.5	10	37	58	122	66	123	66.5	151	151	127	10	127
67	86	11	37	59	123	67	124	67.5	152	152	128	11	128
68	85.5	12	37	60	124	68	125	68.5	153	153	129	12	129
69	85	13	37	61	125	69	126	69.5	154	154	130	13	130
70	84.5	14	37	62	126	70	127	70.5	155	155	131	14	131
71	84	15	37	63	127	71	128	71.5	156	156	132	15	132
72	83.5	16	37	64	128	72	129	72.5	157	157	133	16	133
73	83	17	37	65	129	73	130	73.5	158	158	134	17	134
74	82.5	18	37	66	130	74	131	74.5	159	159	135	18	135
75	82	19	37	67	131	75	132	75.5	160	160	136	19	136
76	81.5	20	37	68	132	76	133	76.5	161	161	137	20	137
77	81	21	37	69	133	77	134	77.5	162	162	138	21	138
78	80.5	22	37	70	134	78	135	78.5	163	163	139	22	139
79	80	23	37	71	135	79	136	79.5	164	164	140	23	140
80	79.5	24	37	72	136	80	137	80.5	165	165	141	24	141
81	79	25	37	73	137	81	138	81.5	166	166	142	25	142
82	78.5	26	37	74	138	82	139	82.5	167	167	143	26	143
83	78	27	37	75	139	83	140	83.5	168	168	144	27	144
84	77.5	28	37	76	140	84	141	84.5	169	169	145	28	145
85	77	29	37	77	141	85	142	85.5	170	170	146	29	146
86	76.5	30	37	78	142	86	143	86.5	171	171	147	30	147
87	76	31	37	79	143	87	144	87.5	172	172	148	31	148
88	75.5	32	37	80	144	88	145	88.5	173	173	149	32	149
89	75	33	37	81	145	89	146	89.5	174	174	150	33	150
90	74.5	34	37	82	146	90	147	90.5	175	175	151	34	151
91	74	35	37	83	147	91	148	91.5	176	176	152	35	152
92	73.5	36	37	84	148	92	149	92.5	177	177	153	36	153
93	73	37	37	85	149	93	150	93.5	178	178	154	37	154
94	72.5	38	37	86	150	94	151	94.5	179	179	155	38	155
95	72	39	37	87	151	95	152	95.5	180	180	156	39	156
96	71.5	40	37	88	152	96	153	96.5	181	181	157	40	157
97	71	41	37	89	153	97	154	97.5	182	182	158	41	158
98	70.5	42	37	90	154	98	155	98.5	183	183	159	42	159
99	70	43	37	91	155	99	156	99.5	184	184	160	43	160
100	69.5	44	37	92	156	100	157	100.5	185	185	161	44	161