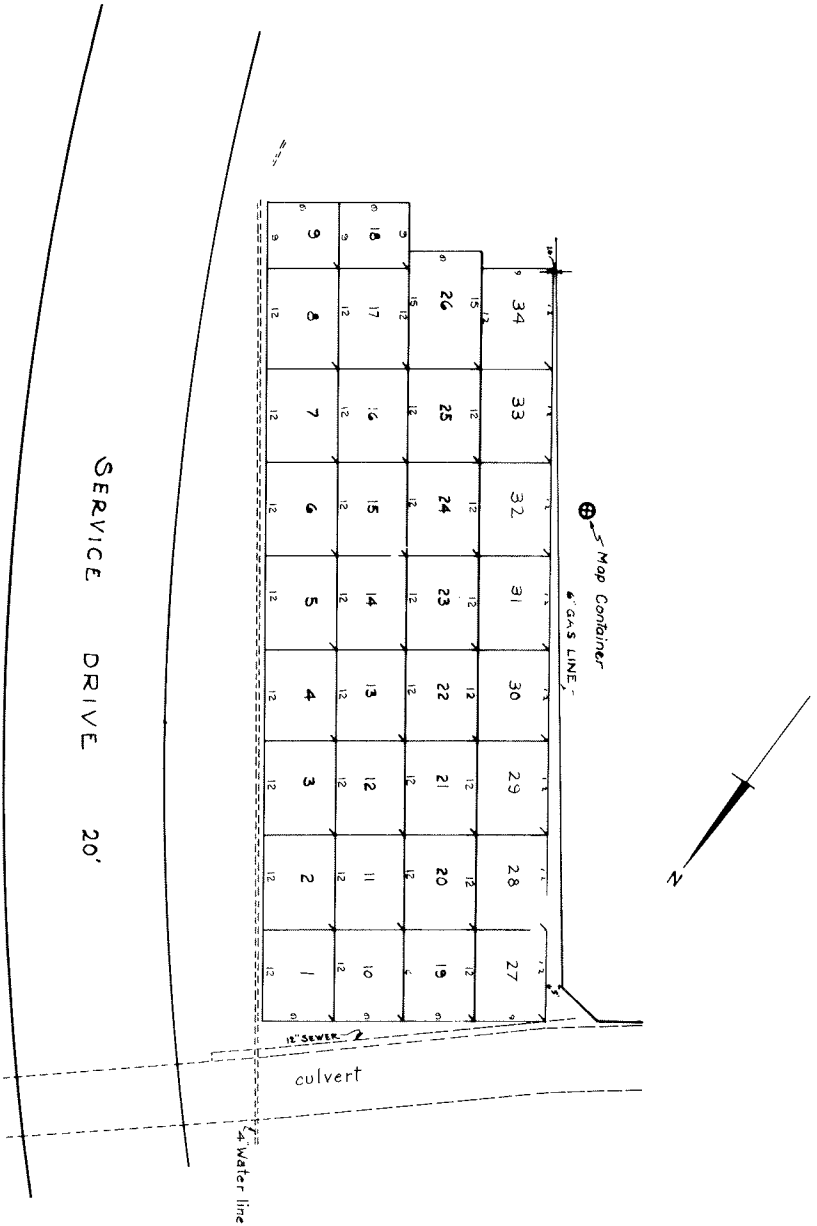


LINE	AREA	GRADES	STREETS	AREA	GRADES	LINE	AREA	GRADES
1	108	4	17	108	4	31	108	4
2	108	4	17	108	4	32	108	4
3	108	4	16	61	3	33	108	4
4	108	4	19	106	4	34	108	4
5	108	4	20	106	4			
6	108	4	21	109	4			
7	108	4	22	109	4			
8	108	4	23	109	4			
9	61	3	24	108	4			
10	108	4	25	108	4			
11	108	4	26	108	4			
12	108	4	27	108	4			
13	108	4	28	108	4			
14	108	4	29	108	4			
15	108	4	30	108	4			



REV ① -  
REV ② - 1-3-58

CALVARY CEMETERY  
SECTION 105 E.P.  
Scale 1"=10'  
SEP 1938  
ENGINEER: R. G. MARQUARD  
CALVARY CEMETERY  
NUMERICAL LOT MARKERS ARE LOCATED IN UPPER & 2ND HAND  
CORNER AS YOU FACE THE LOT AND ARE IDENTICAL WITH

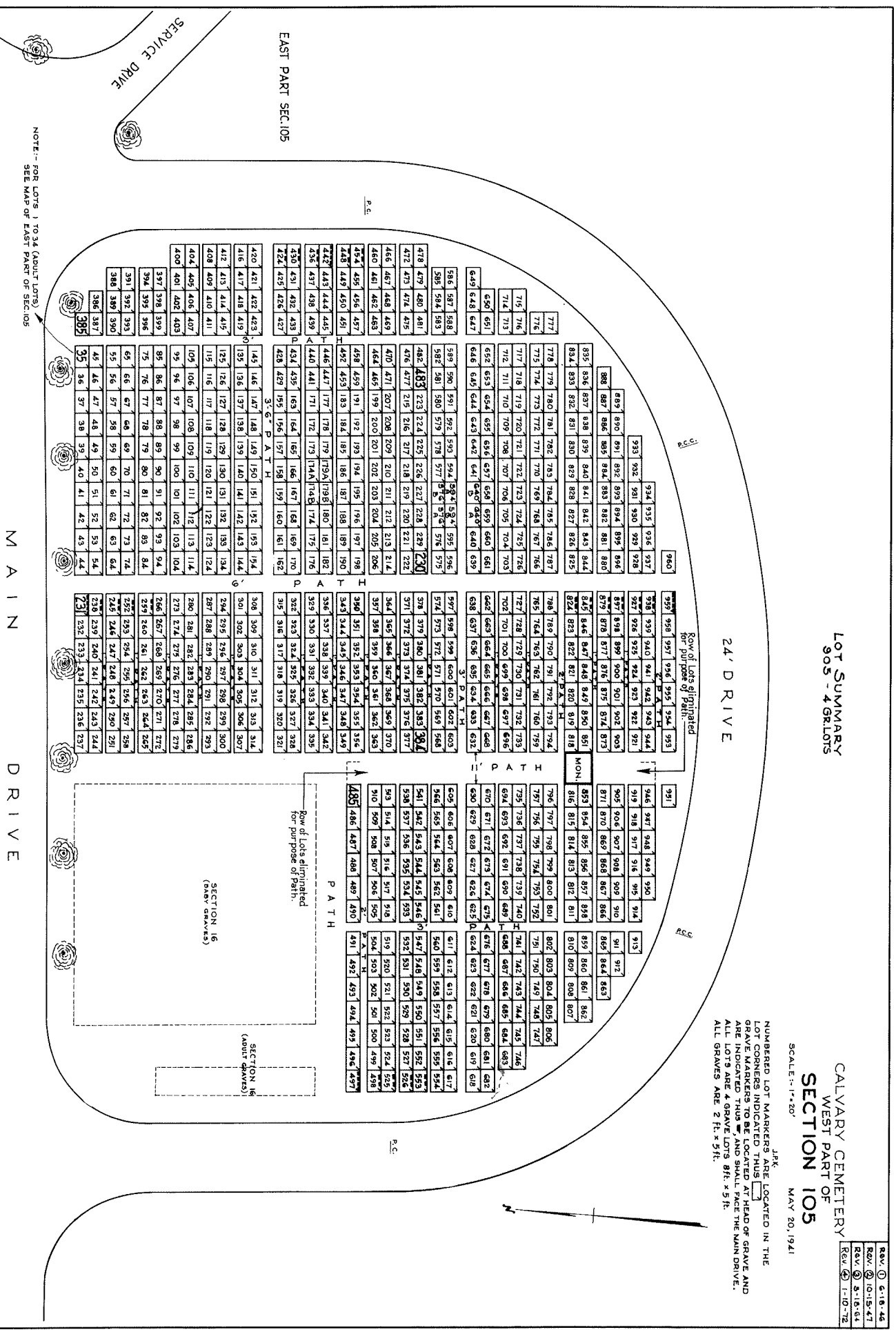
LOT SUMMARY  
905 - 4 GRLOTS

CALVARY CEMETERY  
WEST PART OF  
SECTION 105

REV. 1-10-72  
REV. 2-16-61  
REV. 10-15-47  
REV. 6-18-46

SCALE: 1"=20'  
MAY 20, 1941

NUMBERED LOT MARKERS ARE LOCATED IN THE  
LOT CORNERS INDICATED THUS GRAVE MARKERS TO BE LOCATED AT HEAD OF GRAVE AND  
ALL LOTS HAVE 4 SIDES AND SHALL FACE THE MAIN DRIVE.  
ALL GRAVES ARE 2 FT. x 5 FT.



NOTE:- FOR LOTS 1 TO 34 (ADULT LOTS)  
SEE MAP OF EAST PART OF SEC. 105

MAIN DRIVE

SERVICE DRIVE

EAST PART SEC. 105

24' DRIVE

P A T H

Row of Lots eliminated  
for purpose of Path.

SECTION 16  
(ADULT GRAVES)

SECTION 16  
(ADULT GRAVES)

SERVICE BLDG. DR.

4" C.I.P. WATER LINE

MAIN DRIVE

BOX CULVERT

Future Road

DRIVE

LOT	GR. EUM.	LOT	GR. EUM.
1397	1,2,3,4	1387	1,2,3
1398	1,2,3	1388	5
1399	5	1407	1,2
1400	1,2,3	1408	4,5
1401	5	1427	1,2
1402	1,2,3	1428	4,5
1403	5		

NOTE: THE FOLLOWING LOTS HAVE BEEN EUM:  
 1448, 1488, 1489, 1508, 1528, 1548, 1588,  
 1589, 1608, 1628, 1648

THE LOT NUMBERS ARE PLACED IN THE UPPER RIGHT HAND CORNER OF LOTS AS YOU FACE THE LOTS AND ARE INDICATED THUS  
 LOCATION OF GRAVE MARKER SHOWN  
 ARROW: INDICATES DIRECTION GRAVE MARKERS WILL FACE  
 ALL LOTS ARE 5 GRAVE LOTS. (5x10) (EXCEPT LOTS ABOVE)  
 ALL GRAVES ARE 5x2

CALVARY CEMETERY  
 SOUTH PART OF  
 SECTION 105  
 SCALE: 1"=20'  
 REV. 3-9-57  
 REV. 4-1-58  
 APRIL 16, 1953  
 REV. 1-4-56  
 REV. 2-9-57

