

NOTE:
 Lots Appearing on This Map Are
 As Follows:
 17 - 51
 71 - 93
 145 - 154
 156 - 193
 270 - 282
 303 - 313

NOTE:
 For Table of Range Burials
 See Map of West Part.

NOTE:
 Numbered Lot Markers are
 indicated thus

CALVARY CEMETERY
 EAST PART OF
SECTION 1
 SCALE 1"=20'
 REV. ① 6/2/47 G.C.A. REDRAWN
 REV. ② 6/27/51 AUG. 27, 1951

EAST 96 TH STREET

CALVARY CEMETERY PROP. LINE

321	322	323	324	325	326	327	328	329	330	331	332	333	334	335	336	337	338	339	340	341	342	343	344	345	346	347	348	349	350	351	352	353	354	355	356	357	358	359	360	361	362	363	364	365	366																																																			
367	368	369	370	371	372	373	374	375	376	377	378	379	380	381	382	383	384	385	386	387	388	389	390	391	392	393	394	395	396	397	398	399	400	401	402	403	404	405	406	407	408	409	410	411	412	413	414	415	416	417	418	419	420	421	422	423	424	425	426	427	428	429	430	431	432	433	434	435	436	437	438	439	440	441	442	443	444	445	446	447	448	449	450	451	452	453	454	455	456	457	458	459	501	502	503	504

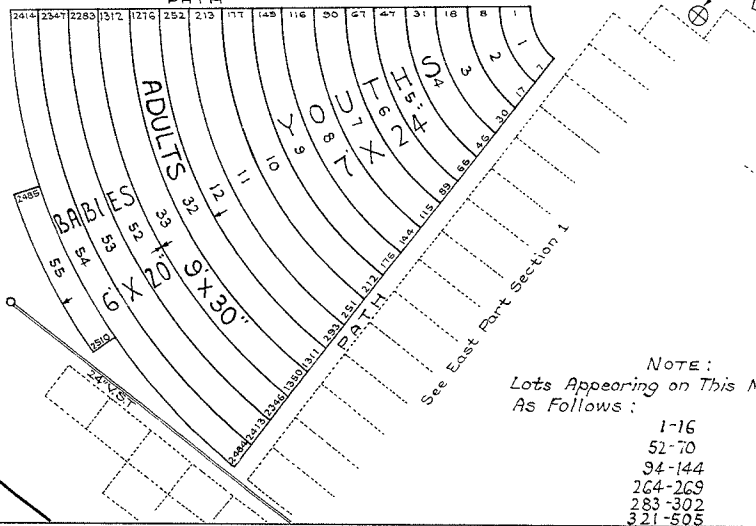
10' PATH

10' PATH

8' PATH

463	464	465	466	467	468	469	470	471	472	473	474	475	476	477	478	479	480	481	482	483	484	485	486	487	488	489	490	491	492	493	494	495	496	497	498	499	500	501	502	503	504
-----	-----	-----	-----	-----	-----	-----	-----	-----	-----	-----	-----	-----	-----	-----	-----	-----	-----	-----	-----	-----	-----	-----	-----	-----	-----	-----	-----	-----	-----	-----	-----	-----	-----	-----	-----	-----	-----	-----	-----	-----	-----

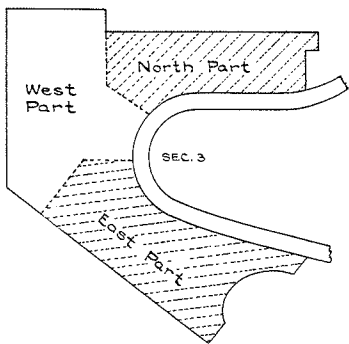
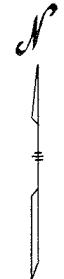
BABIES
6' X 20"



SEC. 1-TABLE OF SINGLE GRAVE BURIALS

TYPE OF BURIAL	SIZE OF GRAVES	RANGES	GRAVE NO.	LOCATED IN	LOTS
ADULTS (CONSECRATED)	9' X 30"	1 To 22	1 To 1015	E. PART	
	9' X 30"	23 To 31	1016 To 1275	N. PART	
	9' X 30"	32 To 33	1276 To 1350	W. PART	
	9' X 30"	34 To 40	1351 To 1700	N. PART	
YOUTHS (CONSECRATED)	7' X 24"	1 To 12	1 To 293	W. PART	
	6' X 20"	1 To 28	1 To 1512	W. PART	
BABIES (CONSECRATED)	6' X 20"	29 To 36	1513 To 1739	E. PART	
	6' X 20"	37 To 51	1740 To 2282	N. PART	
	6' X 20"	52 To 55	2283 To 2510	W. PART	
	6' X 20"	56 To 70	2511 To 2941	E. PART	

See North Part Section 1



DEC. 1905 F.W. KARBEN-ENG CALVARY CEMETERY LOTS 321-505 SUBDIVIDED NOV. 1932

NOTE:
Lots Appearing on This Map Are As Follows:

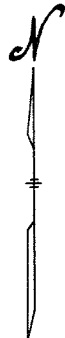
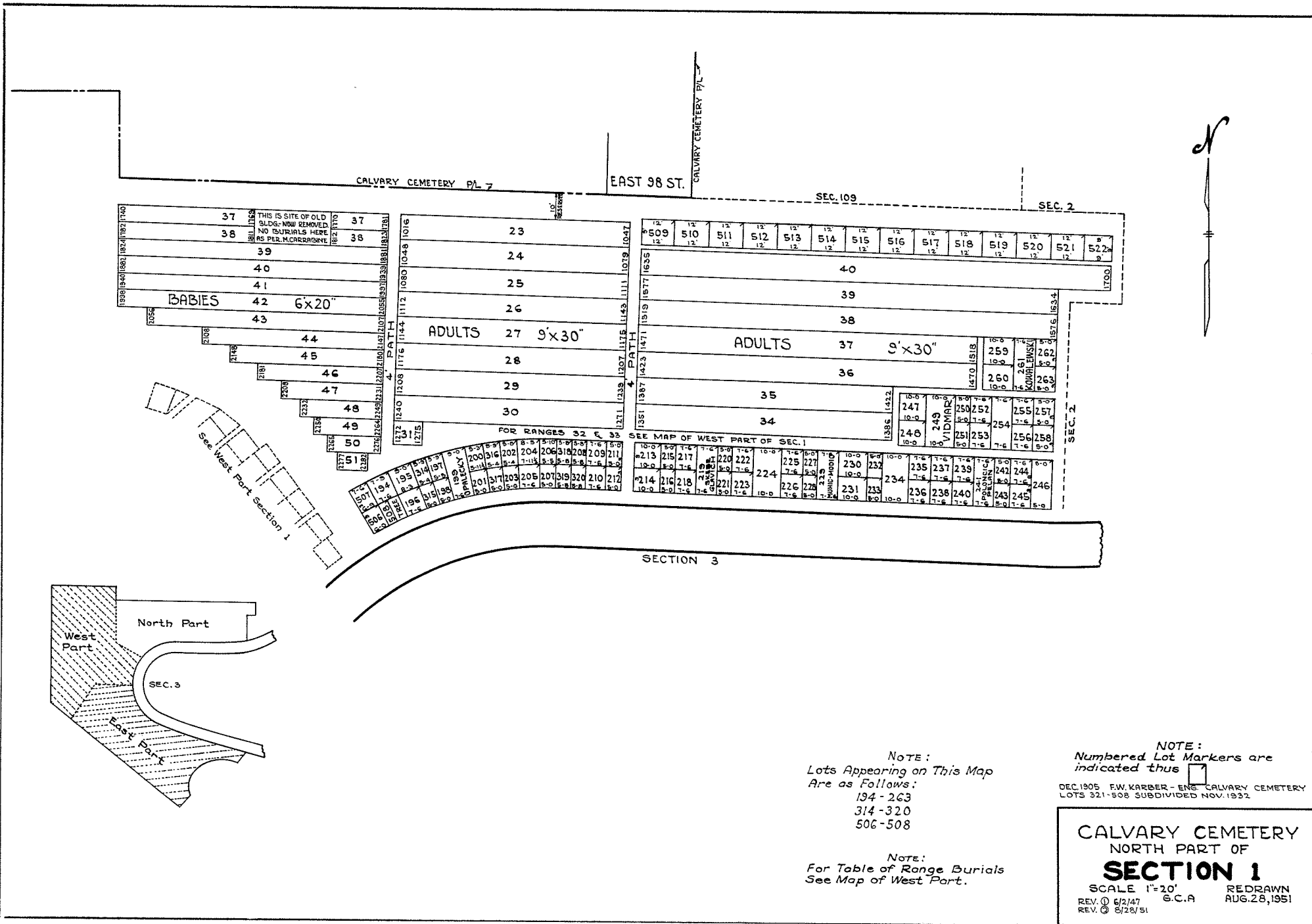
- 1-16
- 52-70
- 94-144
- 264-269
- 283-302
- 321-505

NOTE:
Numbered Lot Markers are indicated thus

CALVARY CEMETERY
WEST PART OF
SECTION 1

SCALE 1"=20'
REV. ① 6/2/47
REV. ② 8/24/51
G.C.A.
REDRAWN
AUG. 24, 1951

PENNA. R.R. R/W



NOTE:
 Lots Appearing on This Map
 Are as Follows:
 194 - 263
 314 - 320
 506 - 508

NOTE:
 For Table of Range Burials
 See Map of West Part.

NOTE:
 Numbered Lot Markers are
 indicated thus 7
 DEC. 1905 F.W. KARBUR - ENG. CALVARY CEMETERY
 LOTS 321-508 SUBDIVIDED NOV. 1932

**CALVARY CEMETERY
 NORTH PART OF
 SECTION 1**
 SCALE 1"=20' REDRAWN
 REV. ① 6/2/47 G.C.A. AUG. 28, 1951
 REV. ② 6/28/51