

NOTE:
 THE LOT NUMBER IS FOUND IN THE UPPER RIGHT
 HAND CORNER OF THE LOTS AS YOU FACE THE
 LOTS AND IS INDICATED THUS []

LOCATION OF GRAVE MARKERS SHOWN THUS
 ARROW INDICATES DIRECTION GRAVE MARKERS
 WILL FACE.

ALL LOTS ARE 2 GRAVE LOTS EXCEPT WHERE
 OTHERWISE NOTED.
 ALL 2 GRAVE LOTS ARE 6'x9'
 ALL 3 GRAVE LOTS ARE 9'x9'

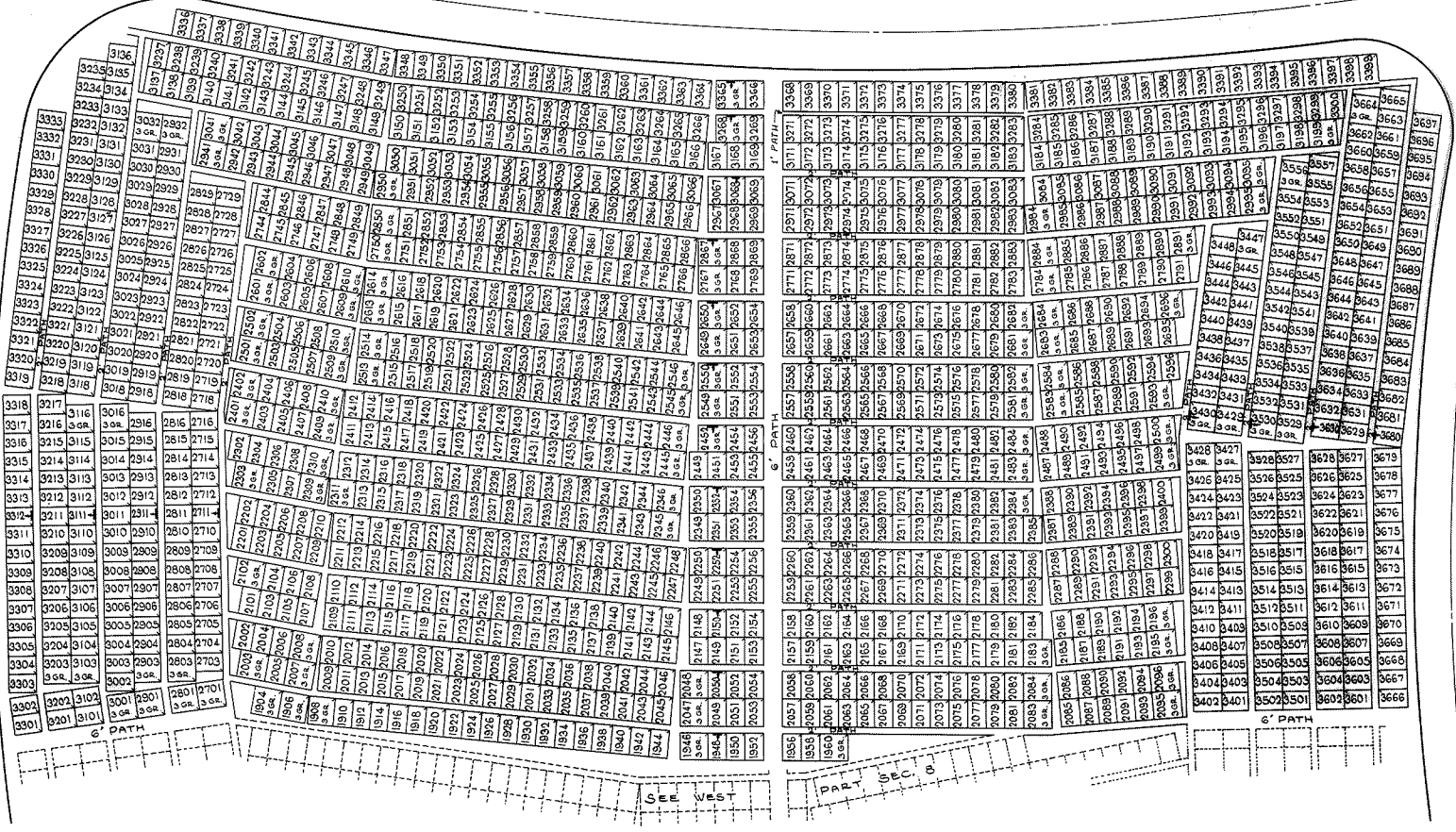
1499 - 2 GRAVE LOTS
 82 - 3 GRAVE LOTS
 1582 - TOTAL LOTS

ALL SAINTS CEMETERY
 NORTHFIELD, OHIO
WEST PART
SECTION 8

REV. (A) 4-17-89
 REV. (C) 1-22-76
 SCALE 1" = 20' G.C.A. APRIL, 1963

Sec. 16

Sec. 17



NOTE:
 THE LOT NUMBER IS FOUND IN THE UPPER RIGHT
 HAND CORNER OF THE LOTS AS YOU FACE THE LOTS
 AND IS INDICATED THUS [arrow pointing to a lot number]

LOCATION OF GRAVE MARKERS SHOWN THUS [arrow pointing to a grave marker symbol]
 ARROW INDICATES DIRECTION GRAVE MARKERS
 WILL FACE.
 LOTS 3368 THROUGH 3399 ARE RESERVED FOR
 ORDINARY DEPTH BURIALS ONLY.

ALL LOTS ARE 2 GRAVE LOTS EXCEPT WHERE
 OTHERWISE NOTED.

ALL 2 GRAVE LOTS ARE 6'x9'
 ALL 3 GRAVE LOTS ARE 9'x9'
 1395 2 GRAVE LOTS
 1487 3 GRAVE LOTS
 TOTAL LOTS

ALL SAINTS CEMETERY
 NORTHFIELD, OHIO
EAST PART
SECTION 8
 SCALE 1"=20' G.C.A. APRIL, 1963

Sec. 7