

THE LOT NUMBER IS FOUND IN THE UPPER RIGHT HAND CORNER OF THE LOT AS YOU FACE THE LOT AND IS INDICATED THUS () LOCATION OF GRAVE MARKERS SHOWN THUS () ARROW INDICATES DIRECTION GRAVE MARKERS WILL FACE. ALL LOTS ARE 2 GRAVE LOTS EXCEPT WHERE OTHERWISE NOTED. ALL 2 GRAVE LOTS ARE 6'x8' ALL 3 GRAVE LOTS ARE 5'x8' 1487 - 2 GRAVE LOTS 257 - 3 GRAVE LOTS 1744 - TOTAL LOTS

ALL SAINTS CEMETERY
 NORTHFIELD, OHIO
EAST PART
SECTION 4
 SCALE 1" = 20' G.C.A. OCT. 1982

SEC 3

LAKE

BRANDYWINE RD.

CEMETERY PROP. LINE

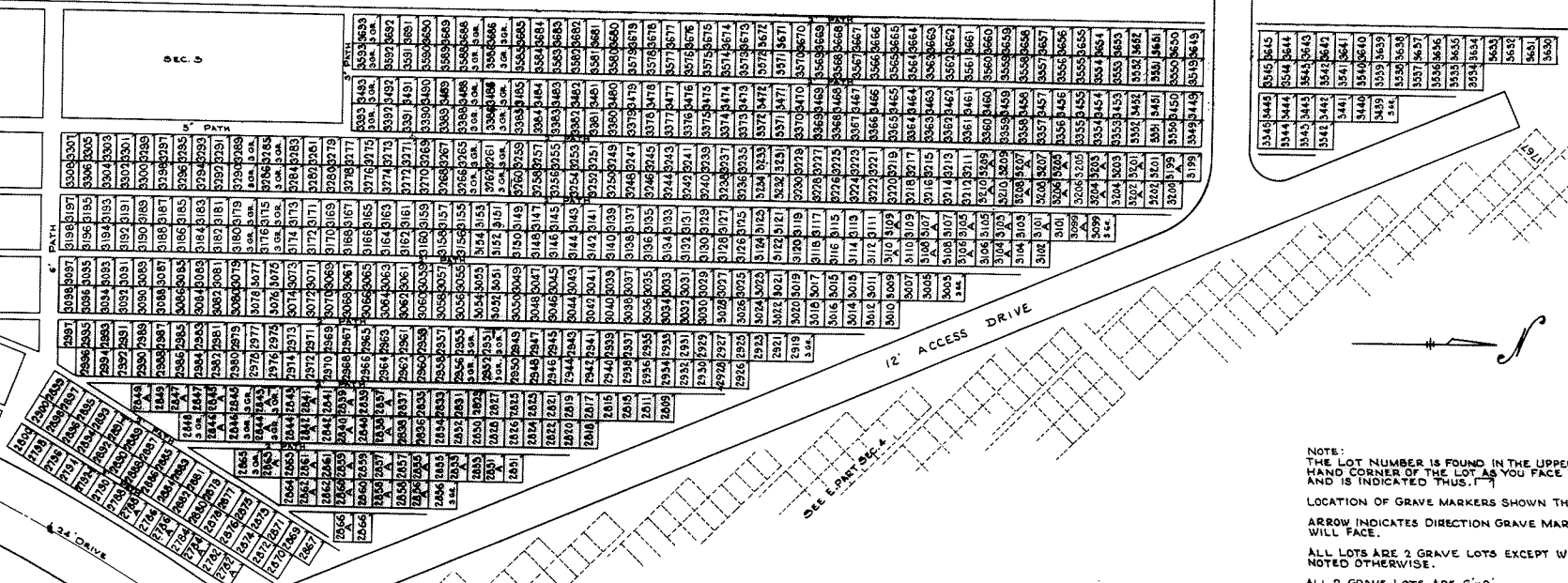
30' EASEMENT

SEC. 5

34 DRIVE

12' ACCESS DRIVE

SEE PART 3 & 4



NOTE:
 THE LOT NUMBER IS FOUND IN THE UPPER RIGHT
 HAND CORNER OF THE LOT AS YOU FACE THE LOT
 AND IS INDICATED THUS: (1)

LOCATION OF GRAVE MARKERS SHOWN THUS T
 ARROW INDICATES DIRECTION GRAVE MARKERS
 WILL FACE.

ALL LOTS ARE 2 GRAVE LOTS EXCEPT WHERE
 NOTED OTHERWISE.

ALL 2 GRAVE LOTS ARE 6'x9'
 ALL 3 GRAVE LOTS ARE 8'x8'

LOT SUMMARY -
 695 2 GRAVE LOTS
 25 3 GRAVE LOTS
 720 TOTAL LOTS

ALL SAINTS CEMETERY
 NORTHFIELD, OHIO
WEST PART
SECTION 4

REV. ① 8-20-75
 REV. ② 4-1-73
 REV. ③ 7-8-64

SCALE 1"=20' G.C.A. OCT. 1962