

NOTE:  
 THE LOT NUMBER IS PLACED IN THE UPPER  
 RIGHT HAND CORNER OF LOTS AS YOU FACE  
 THE LOTS AND IS INDICATED THUS ↗

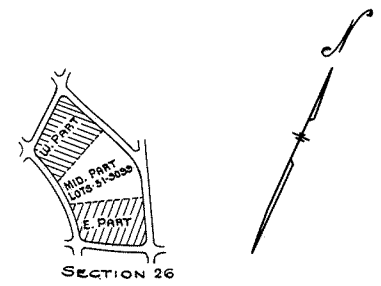
LOCATION OF GRAVE MARKERS SHOWN THUS ↖  
 ARROW INDICATES DIRECTION GRAVE MARKERS  
 WILL FACE.

ALL LOTS ARE 2 GRAVE LOTS EXCEPT WHERE  
 OTHERWISE NOTED.

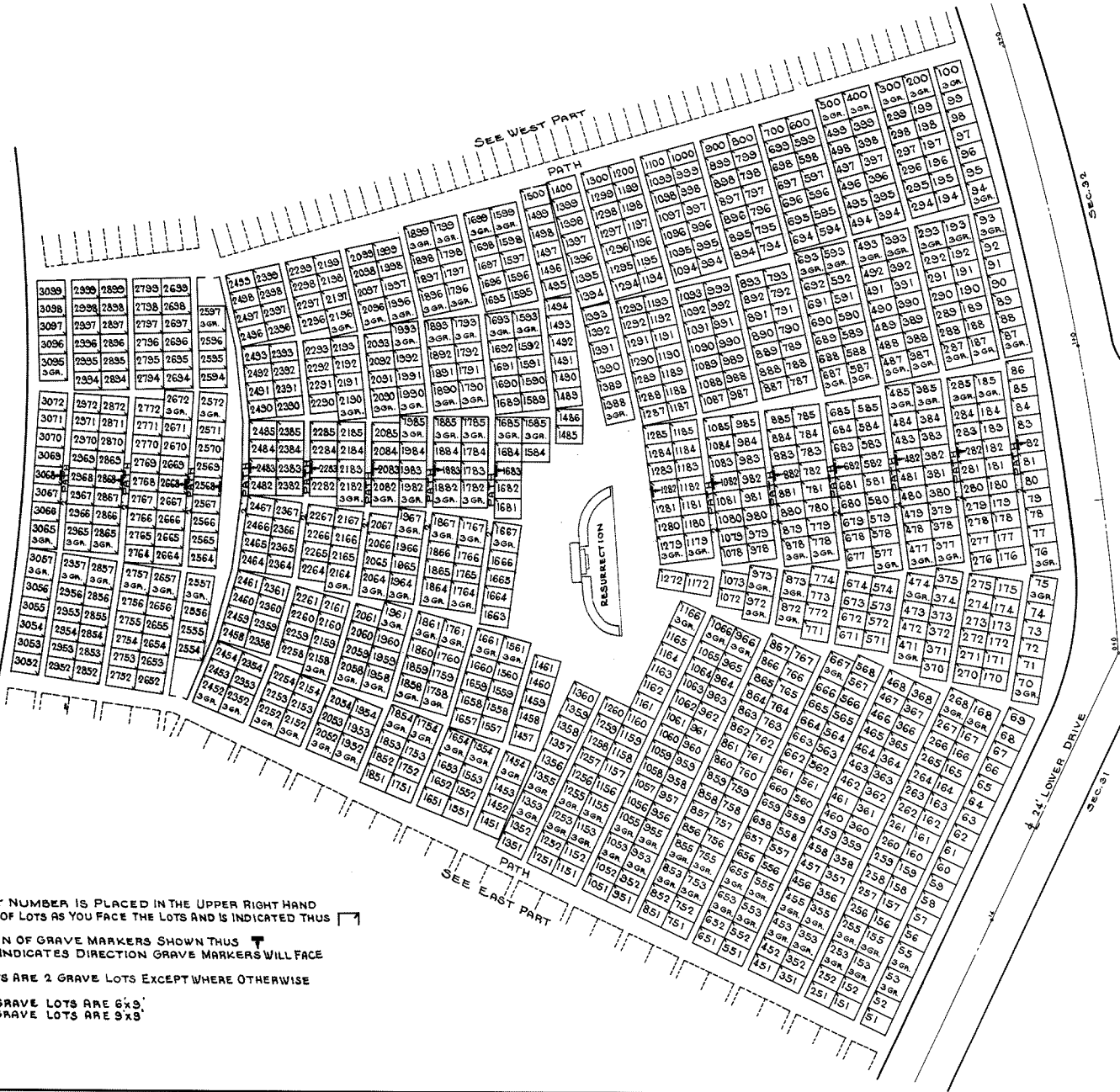
ALL 2 GRAVE LOTS ARE 6'x9'  
 ALL 3 GRAVE LOTS ARE 9'x9'

LOT SUMMARY  
 656 2 GR. LOTS  
 97 3 GR. LOTS  
 753 TOTAL LOTS

ALL SOULS CEMETERY  
 EAST PART  
**SECTION 26**  
 SCALE 1"=20' G.C.A. MAY, 1958



SECTION 26



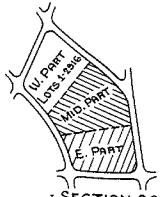
NOTE:  
 THE LOT NUMBER IS PLACED IN THE UPPER RIGHT HAND CORNER OF LOTS AS YOU FACE THE LOTS AND IS INDICATED THUS [ ]

LOCATION OF GRAVE MARKERS SHOWN THUS [ ]  
 ARROW INDICATES DIRECTION GRAVE MARKERS WILL FACE

ALL LOTS ARE 2 GRAVE LOTS EXCEPT WHERE OTHERWISE NOTED.  
 ALL 2 GRAVE LOTS ARE 6x3'  
 ALL 3 GRAVE LOTS ARE 9x3'

LOT SUMMARY  
 817 2 GR. LOTS  
 147 3 GR. LOTS  
 964 TOTAL LOTS

**ALL SOULS CEMETERY**  
 MIDDLE PART  
**SECTION 26**  
 SCALE 1" = 20'  
 Rev. 0 2/10/60 G. C. A. MAY, 1958  
 Rev. 0 7/10/60



SECTION 26

SEC. 24

24' DRIVE



NOTE:  
THE LOT NUMBER IS PLACED IN THE UPPER RIGHT HAND CORNER OF LOTS AS YOU FACE THE LOTS AND IS INDICATED THUS [ ]

LOCATION OF GRAVE MARKERS SHOWN THUS ↑  
ARROW INDICATES DIRECTION GRAVE MARKERS WILL FACE

BURIAL CLASSIFICATIONS  
 LOTS 1-48 RESERVED FOR FETUS BURIALS (10'x30'GR.) UNCON.  
 LOTS 51-486 " FOR BABIES (2'x5'GR.) UNCONSECATED  
 LOTS 501-547 " FOR LIMBS (10'x30'GR.) CONSECRATED  
 LOTS 551-2916 " FOR BABIES (2'x5'GR.) CONSECRATED

LOT SUMMARY  
 46 LOTS (1-48) ARE 10 GRAVE LOTS (2.5'x10')  
 28 LOTS (501-547) ARE 20 GRAVE LOTS (5'x10')  
 ALL OTHER LOTS ARE 5 GRAVE LOTS (5'x10')

ALL SOULS CEMETERY  
 WEST PART  
**SECTION 26B**

REV. 1-19-83  
 REV. 4-12-82

SCALE 1"=20' G.C.A. APRIL, 1958

FINAL 6-25-58

26  
W.F.