

NOTE:
THE LOT NUMBER IS PLACED IN THE UPPER
RIGHT HAND CORNER OF LOTS AS YOU FACE
THE LOT AND IS INDICATED THUS

LOCATION OF GR. MARKER SHOWN THUS
ARROW INDICATES DIRECTION GRAVE
MARKERS WILL FACE.

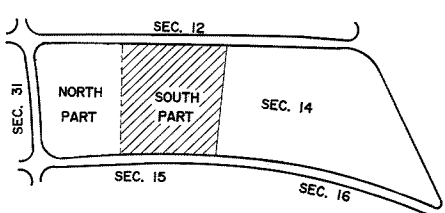
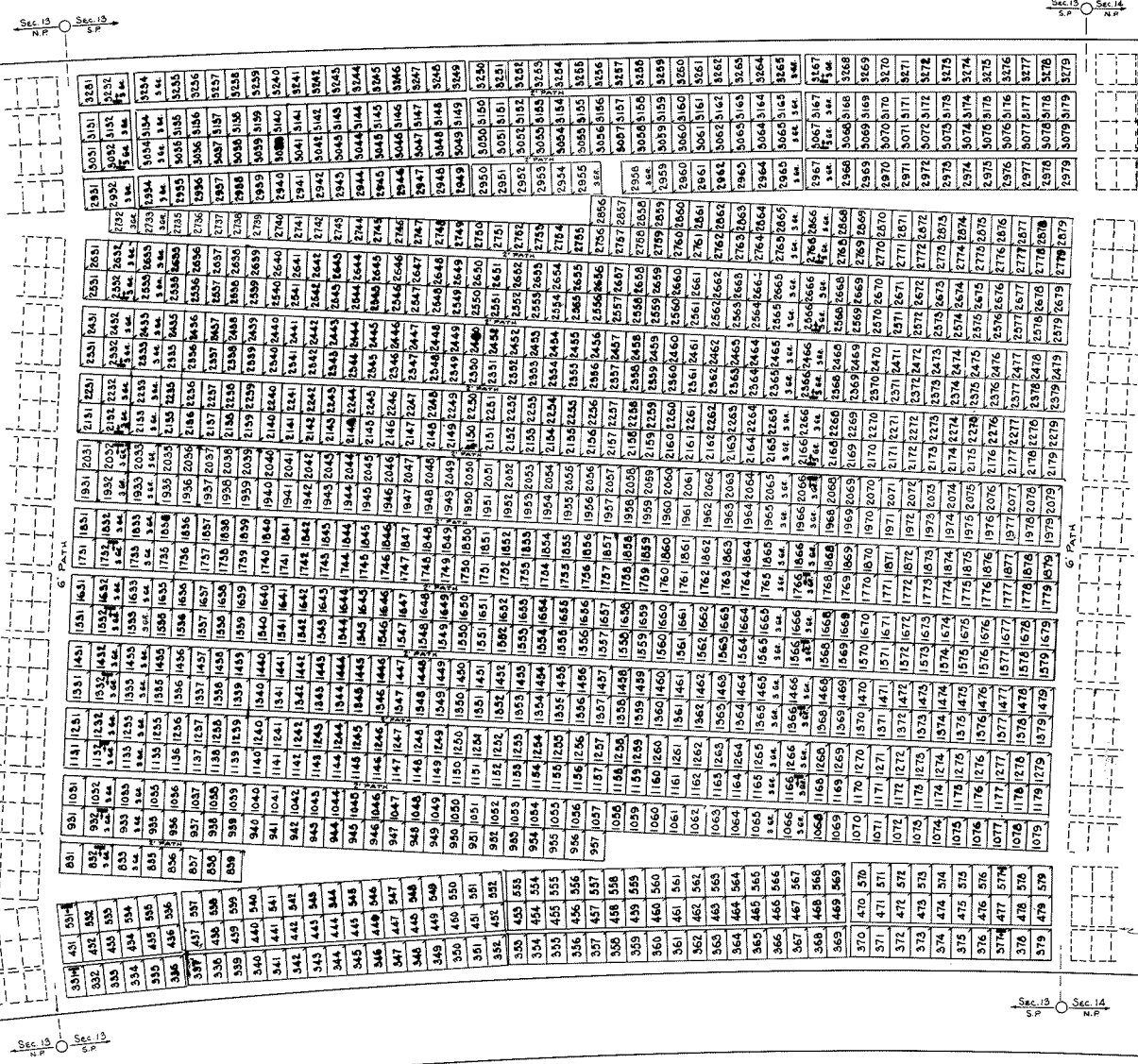
ALL LOTS ARE 2 GRAVE LOTS EXCEPT
WHERE OTHERWISE NOTED.

ALL 2 GR. LOTS ARE 6' X 9'
ALL 3 GR. LOTS ARE 9' X 9'

LOT SUMMARY
804 2 GR. LOTS
22 3 GR. LOTS
826 TOTAL LOTS

ALL SOULS CEMETERY
NORTH PART
SECTION 13

SCALE: 1" = 20' T.H. JULY 30, 1975



NOTE:
THE LOT NUMBER IS PLACED IN THE UPPER
RIGHT HAND CORNER OF LOTS AS YOU FACE
THE LOT AND IS INDICATED THUS

LOCATION OF GR. MARKER SHOWN THUS
ARROW INDICATES DIRECTION GRAVE
MARKERS WILL FACE.

ALL LOTS ARE 2 GRAVE LOTS EXCEPT
WHERE OTHERWISE NOTED.

ALL 2 GR. LOTS ARE 6' X 9'
ALL 3 GR. LOTS ARE 9' X 9'

LOT SUMMARY
1142 2 GR. LOTS
92 3 GR. LOTS
1234 TOTAL LOTS

ALL SOULS CEMETERY
SOUTH PART
SECTION 13

SCALE: 1" = 20' T.H. JULY 30, 1975