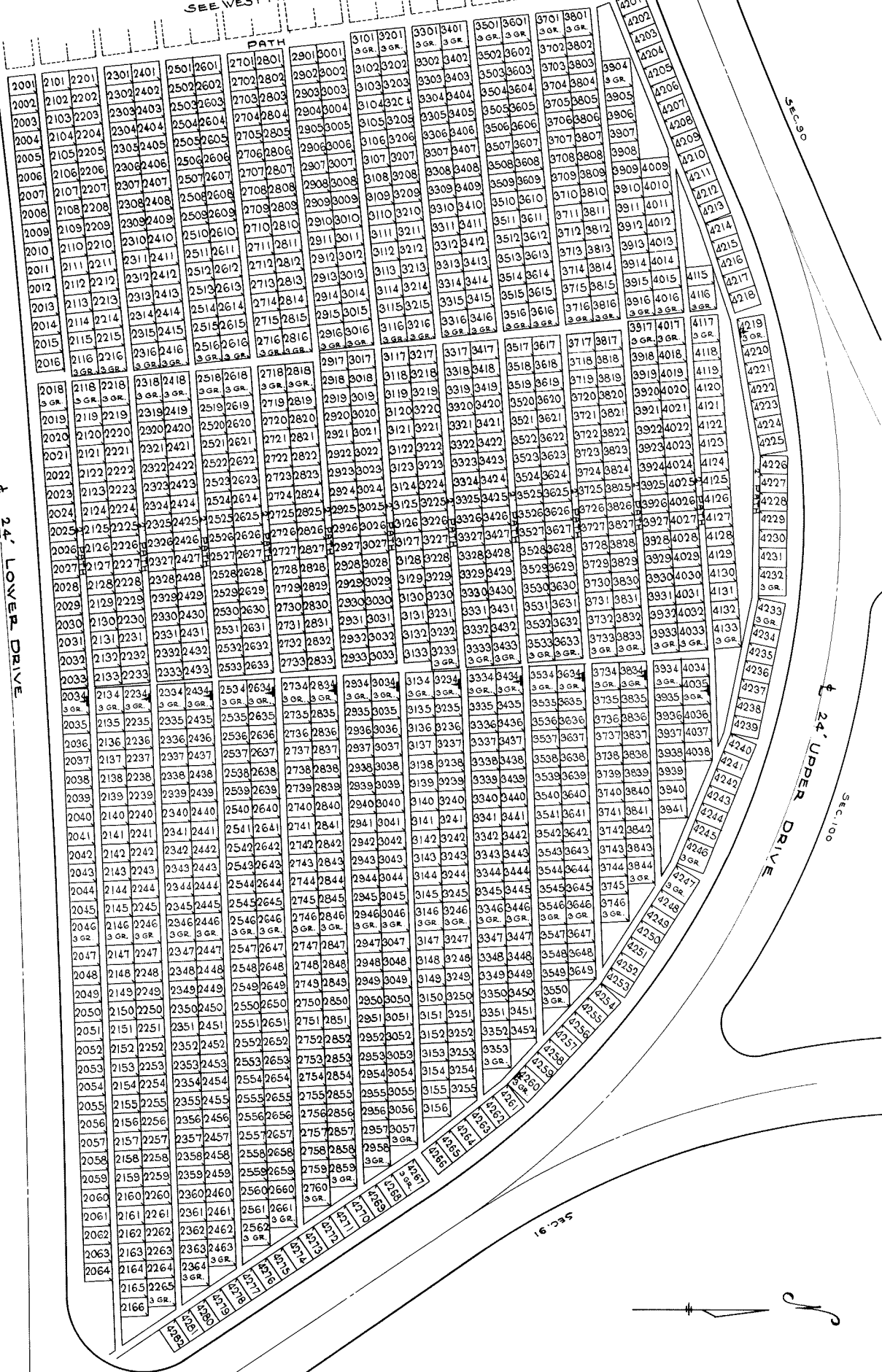


SEE WEST PART



NOTE:
 THE LOT NUMBER IS PLACED IN THE UPPER RIGHT
 HAND CORNER OF LOTS AS YOU FACE THE LOTS
 AND IS INDICATED THUS []

LOCATION OF GRAVE MARKERS SHOWN THUS T
 ARROW INDICATES DIRECTION GRAVE MARKERS
 WILL FACE.
 ALL LOTS ARE 2 GRAVE LOTS EXCEPT WHERE
 OTHERWISE NOTED.
 ALL 2 GRAVE LOTS ARE 6'x9'.
 ALL 3 GRAVE LOTS ARE 9'x9'

LOT SUMMARY
 1175 2 GRAVE LOTS
 119 3 GRAVE LOTS
 1298 TOTAL LOTS


CALVARY CEMETERY
 EAST PART
 SECTION 95
 SCALE 1"=20' G.C.A.
 MAY 14, 1963





SEC. 90

24' UPPER DRIVE

24' DRIVE

24' LOWER DRIVE

NOTE: LOT NUMBER IS PLACED IN THE UPPER RIGHT HAND CORNER OF LOTS AS YOU FACE THE LOTS AND IS INDICATED THUS 

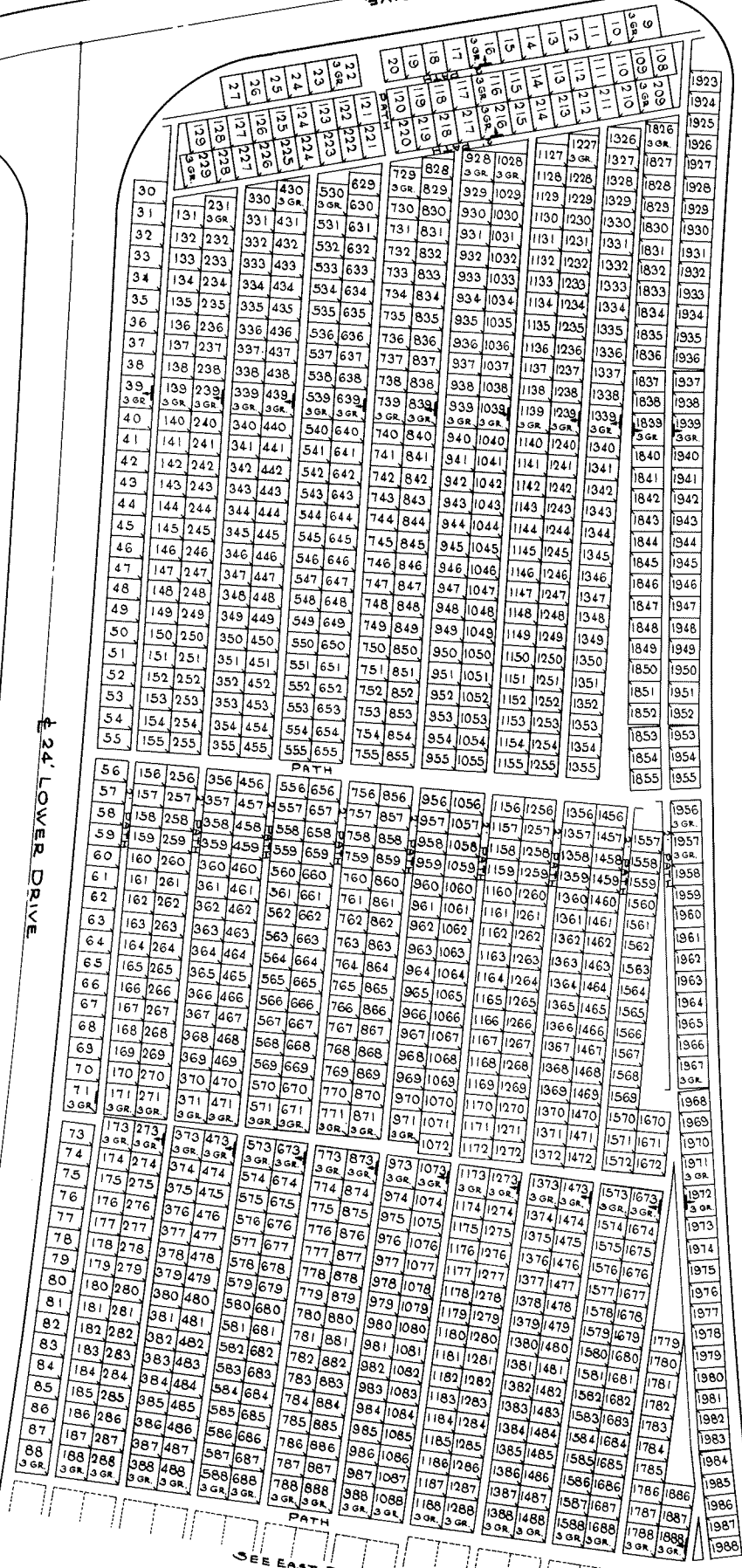
LOCATION OF GRAVE MARKERS SHOWN THUS    

ALL LOTS ARE 2 GRAVE LOTS EXCEPT WHERE OTHERWISE NOTED.

ALL 2 GRAVE LOTS ARE 6'x9'

ALL 3 GRAVE LOTS ARE 9'x9'

LOT SUMMARY
 1005 - 2 GR. LOTS
 1006 - 3 GR. LOTS
 1086 - TOTAL LOTS



SEE EAST PART

CALVARY CEMETERY
 WEST PART
 SECTION 95
 SCALE 1/4" = 20'
 G.C.A.
 MAY 14, 1983