

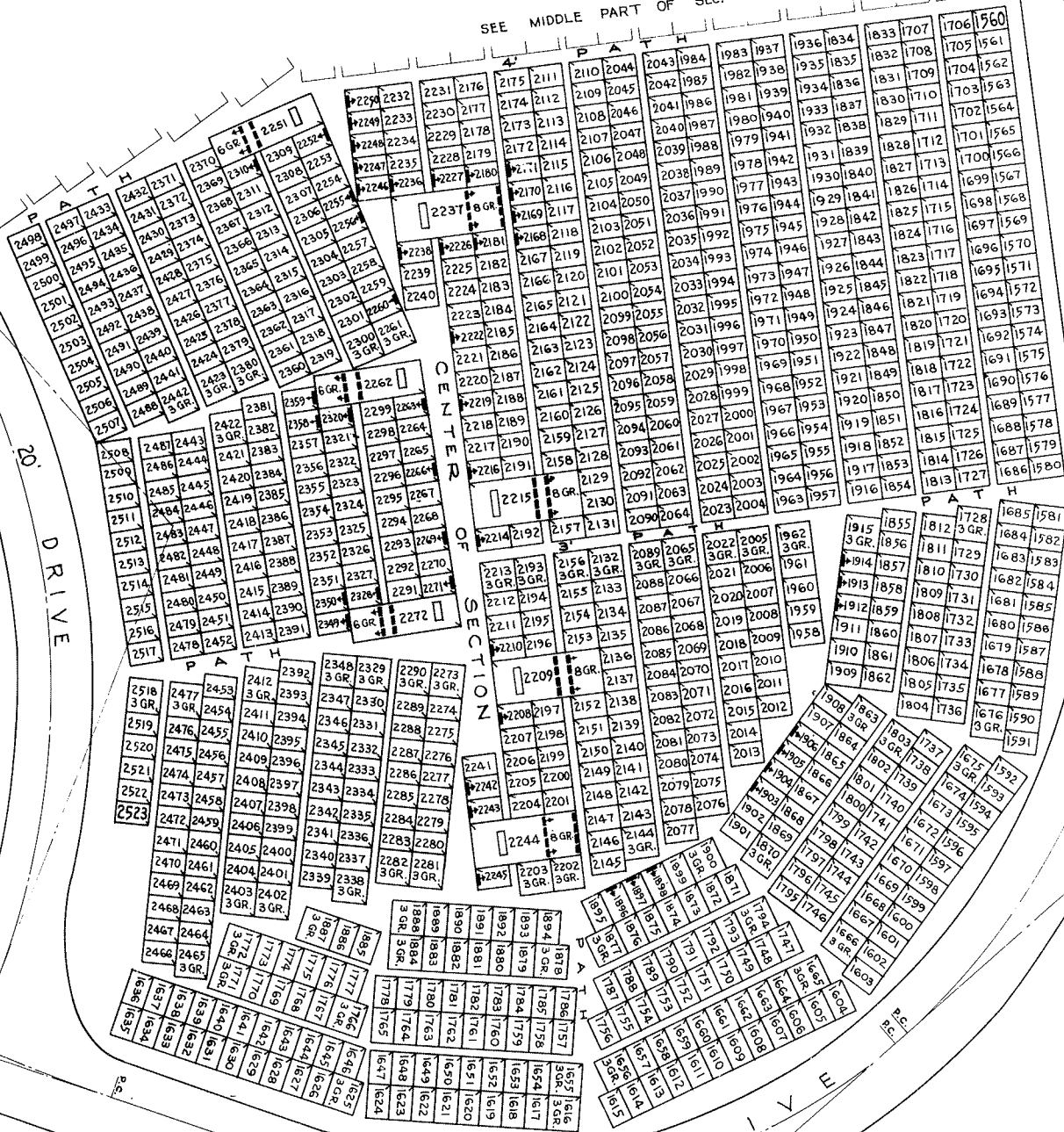
SEE MIDDLE PART OF SEC. 77

24 DRIVE

SEE SEC. 82

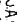

20 DRIVE

SEE SEC. 111



CALVARY CEMETERY
EAST PART OF
SECTION 77

APRIL 2, 1949

NUMBERED LOT MARKERS ARE LOCATED IN THE UPPER
 RIGHT HAND CORNERS OF LOTS FACING THE CENTER OF
 SECTION AND ARE INDICATED THUS 
 GRAVE MARKERS TO BE LOCATED AT HEAD OF GRAVE AND
 ARE INDICATED THUS  AND SHALL FACE IN DIRECTION
 SHOWN BY ARROWS
 ALL LOTS ARE 2 GRAVE LOTS EXCEPT WHERE OTHERWISE
 NOTED.
 ALL 2 GRAVE LOTS ARE 6'x9'
 " 3 " " " 9'x9'

SEE SEC. 76

24' DRIVE

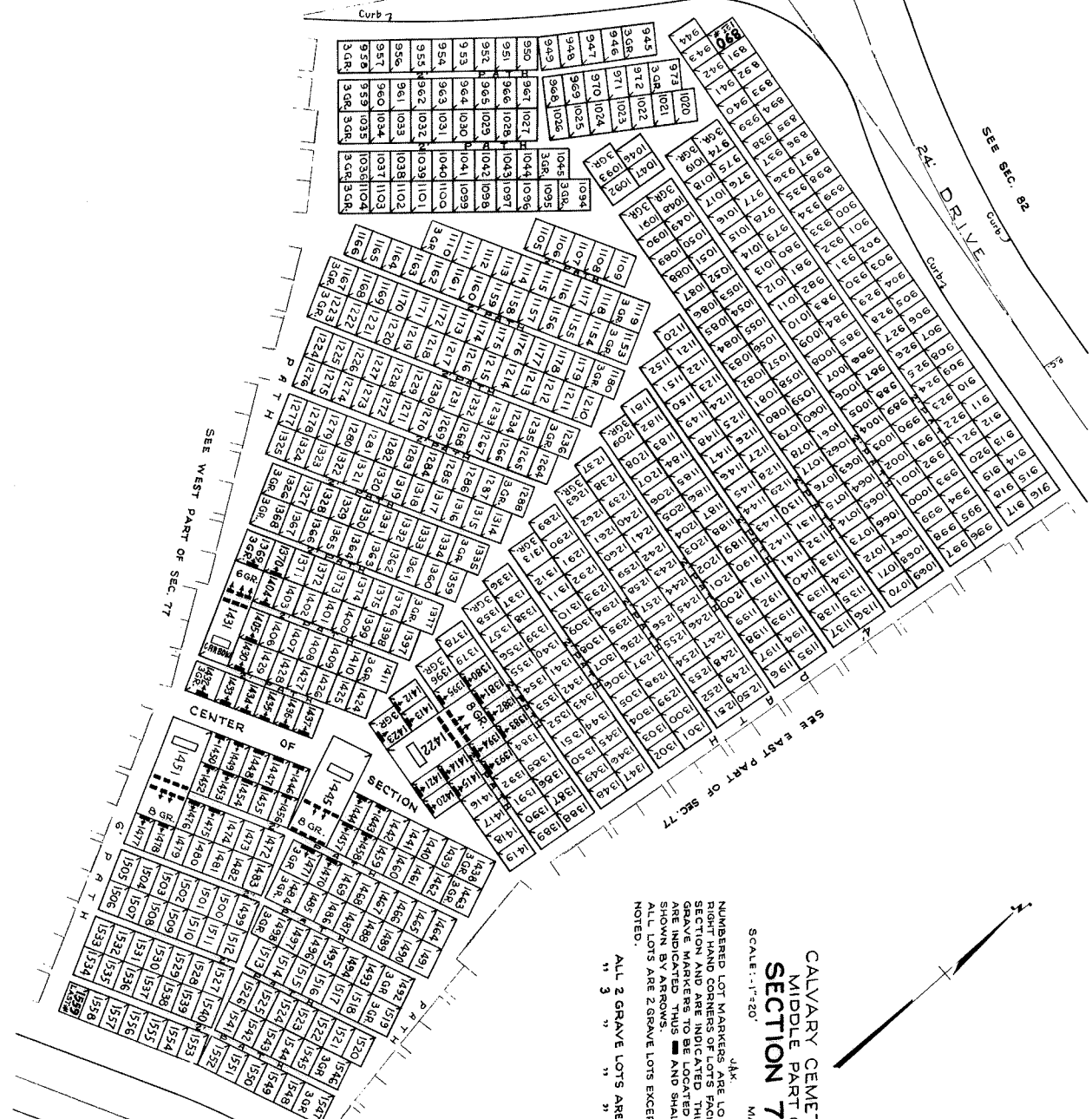
SEE SEC. 82

24' DRIVE

SEE WEST PART OF SEC. 77

SEE EAST PART OF SEC. 77

SEE SEC. 111



CALVARY CEMETERY
MIDDLE PART OF
SECTION 77

SCALE: 1" = 20'
MARCH 12, 1949

NUMBERED LOT MARKERS ARE LOCATED IN THE UPPER RIGHT HAND CORNERS OF LOTS FACING THE CENTER OF SECTION AND ARE INDICATED BY □. GRAVE MARKERS TO BE LOCATED AT HEAD OF GRAVE AND ARE INDICATED BY ▣ AND SHALL FACE IN DIRECTION SHOWN BY ARROWS.
NOTE: LOTS ARE 2 GRAVE LOTS EXCEPT WHERE OTHERWISE NOTED.

ALL 2 GRAVE LOTS ARE 6'x9'
" 3 " " " 9'x9'

SEE SEC. 76

SEE SEC. 113

SEE MIDDLE PART OF SEC. 77

SEE SEC. 111

NUMBERED LOT MARKERS ARE LOCATED IN THE UPPER RIGHT HAND CORNERS OF LOTS FACING THE CENTER OF SECTION AND ARE INDICATED BY A BLACK TRIANGLE. DEAD OF GRAVE AND ARE INDICATED BY A BLACK SQUARE AND SHALL FACE IN DIRECTION SHOWN BY ARROWS.

ALL LOTS ARE 2 GRAVE LOTS EXCEPT WHERE OTHERWISE NOTED.

ALL 2 GRAVE LOTS ARE 6'x9'
 " 3 " " 9'x9'
 " 9'x9'

CALVARY CEMETERY
 WEST PART OF
SECTION 77
 J.R.K.
 MARCH 3, 1929
 SCALE: 1"=20'

8-2-2
 77-3-26
 3-6-65 M.K.
 6-1-21
 1-1-21
 870

